

Indiana Collegiate Action Network

Results of the
**Indiana College
Substance Use Survey
2013**



Results of the Indiana College Substance Use Survey 2013

by

Rosemary King, M.P.H.
Mikyoung Jun, Ph.D.

Indiana Prevention Resource Center
501 N. Morton St., Suite 110
Bloomington, Indiana 47404
www.drugs.indiana.edu

Online survey and report cover designed by Junghun Lee, M.S.

Funded by the Indiana Family and Social Services Administration,
Division of Mental Health and Addiction
through a contract with the Indiana Collegiate Action Network

Recommended citation

King, R.A., & Jun, M.K. (2013). *Results of the Indiana College Substance Use Survey – 2013*.
Bloomington, IN: Indiana Prevention Resource Center, Indiana University.

TABLE OF CONTENTS

List of Tables	ii
List of Figures	iv
Introduction	1
Methodology	3
Key Findings	5
Prevalence and Frequency of Substance Use	5
Consequences of Substance Use	17
Risk Factors	20
Mental Health	27
Gambling Behaviors	29
Characteristics of Survey Participants	33
References	35
Frequency Tables	38

LIST OF TABLES

Table 1. Select Demographic Characteristics of Survey Respondents, 2009 - 2013	2
Table 2. Response Rate, 2013	4
Table 3. Number of Usable Questionnaires, 2013	4
Table 4. Percentage of Students Reporting Use of Select Substances in the Past Year, by Select Demographic Characteristics, 2013.....	6
Table 5. Percentage of Students Reporting Use of Select Substances in the Past Month, by Select Demographic Characteristics, 2013.....	8
Table 6. Percentage of Students Reporting Binge Drinking in the Past Month, by Select Demographic Characteristics, 2013	10
Table 7. Percentage of Students Reporting Binge Drinking in the Past Two Weeks, by Select Demographic Characteristics, 2013	10
Table 8. Percentage of Students Reporting Prescription Drug Misuse in the Past Six Months, by Select Demographic Characteristics, 2013.....	12
Table 9. Percentage of Students Who Drank Alcohol in Past Six Months, Who Indicated Select Reasons for Drinking Alcohol, by Select Demographic Characteristics, 2013 (n = 4,926).....	16
Table 10. Percentage of Students Who Drank Alcohol in the Past Six Months, Who Reported Select Consequences as a Result of Their Drinking, 2013 (n = 4,926)	18
Table 11. Percentage of Students Who Used Drugs in the Past Six Months, Who Reported Select Consequences as a Result of Their Drug Use, 2013 (n = 1,339)	19
Table 12. Average Age of First Time Use of Select Substances, by Select Demographic Characteristics, 2013	21
Table 13. Three Easiest Ways of Getting Alcohol as Reported by Students Who Are Under 21 and Who Drink Alcohol, 2013 (n = 2,489).....	23
Table 14. Mean Number of Drinks Respondents Thought the Typical Student Consumed the Last Time He/She “Partied/Socialized”, by Select Demographic Characteristics, 2013 (range = 0 – 30)	25
Table 15. Percentage of Students Who Thought Other Students on Campus Would Approve or Disapprove of Select Behaviors, 2013	26
Table 16. Mean Number of Mentally Unhealthy Days During the Past Month, by Select Demographic Characteristics, by Select Demographic Characteristics, 2013 (range = 0 – 30).....	28
Table 17. Percentage of Students Reporting Self-Harming or Suicidal Thoughts in the Past Two Weeks, by Select Demographic Characteristics, by Select Demographic Characteristics, 2013 (range = 0 – 14).....	28

Table 18. Percentage of Students Reporting Gambling Behaviors in the Past Year, by Select Demographic Characteristics, 2013	30
Table 19. Percentage of Students Who Gambled in the Past Year, Who Reported Select Consequences as a Result of Their Gambling, 2013 (n = 2,595)	32
Table 20. Demographic Characteristics of Survey Participants, 2013	33

LIST OF FIGURES

Figure 1. Frequency of Binge Drinking in the Past Two Weeks, 2013	10
Figure 2. Percentage of Students Who Drank Alcohol in Past Six Months, Who Combined Alcohol with Energy Drinks or Other Stimulants, 2013 (n = 4,926)	13
Figure 3. Percentage of Students Who Drank Alcohol in Past Six Months, Who Reported Select Categories as the Usual Type of Alcohol They Drank in the Past Month, 2013 (n =4,926)	14
Figure 4. Percentage of Students Under 21 Who Drink Alcohol, Who Reported Purchasing Alcohol from a Retailer in the Past Six Months, 2013 (n = 2,489)	23
Figure 5. Percentage of Students Under 21 Who Have Purchased Alcohol from a Retailer, Who Reported Select Methods as the Most Common for Purchasing Alcohol, 2013 (n = 230)	24
Figure 6. Percentage of Students Under 21 Who Reported Purchasing Alcohol from Retailers, Easiest Place to Purchase Alcohol, 2013 (n = 230)	24
Figure 7. Percentage of Students Who Indicated Select Number of Drinks Consumed by the Typical Student the Last Time He/She “Partied/Socialized”, 2013 (range = 0 – 30)	26
Figure 8. Percentage of Students Who Reported Weekly or More Frequent Gambling in the Past Year, by Gambling Category, 2013	31
Figure 9. Most Frequent Gambling Location (Other Than Online or Lottery) in Past Year, 2013.....	31

INTRODUCTION

Substance use by college students has long been recognized as a serious problem on our nation's campuses, with alcohol being the most widely used substance. In 1998, the National Institute on Alcohol Abuse and Alcoholism undertook a comprehensive assessment of drinking on college campuses, concluding that social and environmental influences present on most campuses have created a culture of drinking, where alcohol consumption has become a rite of passage. Drinking to excess (binge drinking) is widespread among college students, and has serious consequences (NIAAA, 2002). Rates of alcohol and drug use have remained relatively steady over the past decade, with approximately two-thirds of college students nationwide using alcohol in the past month, approximately two-fifths engaging in binge drinking in the past two weeks, and approximately one-fifth using illicit drugs in the past month (Johnston, O'Malley, Bachman, & Schulenberg, 2013).

In 2006, the Indiana Collegiate Action Network (ICAN) provided funding for the first uniform assessment of substance use across institutions of higher education in Indiana, using the Core Alcohol and Drug Survey. Beginning in 2008, the Indiana Division of Mental Health and Addiction (DMHA) has awarded funding to ICAN to continue the statewide collection and analysis of data on the prevalence of substance use by Indiana college students. ICAN, in conjunction with the Indiana Prevention Resource Center (IPRC) developed a new survey instrument in 2009, called the Indiana College Substance Use Survey, to collect information on items of interest to Indiana colleges.

This report summarizes the findings of the fifth annual Indiana College Substance Use Survey that was conducted by the Indiana Prevention Resource Center in the spring of 2013. Findings on the prevalence of alcohol, tobacco and other drug use, consequences of use, alcohol availability, and student perceptions of peer behaviors are presented. The findings have been analyzed across gender and age variables. National prevalence data from the Monitoring the Future Study have been included to facilitate comparison between the participating Indiana college students and the national rates, where available. The Monitoring the Future data are the most recent national data (2012) on college students' prevalence rates of substance use available at the time of this report.

Results from previous years are not presented in this report because the participating schools vary from year to year. The small number of schools participating in the survey and the absence of a random sampling technique make it unsuitable to generalize the findings to Indiana college students overall. Therefore, the data should not be compared to identify any trends in

behaviors over time. The following table provides some demographic data of the survey participants each year. The previous years' reports can be found at www.drugs.indiana.edu/data-survey_icsus.html.

Table 1. Select Demographic Characteristics of Survey Respondents, 2009 - 2013
(Values are percentages)

	2009	2010	2011	2012	2013
Gender					
Male	42.9	36.8	36.2	36.9	36.1
Female	57.1	63.2	63.8	63.1	63.9
Age					
Under 21	53.4	46.1	46.4	53.9	53.2
21 or older	46.6	53.8	53.6	46.1	46.8
Race					
White	86.9	87.9	86.4	84.4	84.1
Black/African American	2.3	3.7	3.9	3.4	4.3
Asian	3.7	2.6	4.3	7.2	5.7
Other	6.4	5.2	4.8	4.3	5.4
Ethnicity					
Hispanic	5.5	3.2	3.1	3.7	3.8
Student status					
Full-time	95.6	89.5	92.0	97.0	93.4
Location of residence					
On-campus	61.9	50.3	45.1	54.8	50.9
# of usable surveys	4,885	5,928	5,304	6,968	6,112

METHODOLOGY

The Indiana College Substance Use Survey was developed in 2009 by the Indiana Collegiate Action Network (ICAN) and the Indiana Prevention Resource Center (IPRC), with input from Indiana institutions of higher education and the Indiana State Epidemiology and Outcomes Workgroup. The survey was developed to assess substance use and consequences, as well as variables associated with use (availability, peer attitudes and norms, and age of first use). Survey items were borrowed or adapted from several sources, including the Core Alcohol and Drug Survey (Core Institute, Southern Illinois University - Carbondale), the National College Health Assessment II (American College Health Association), and the Monitoring the Future Survey (Institute for Social Research, University of Michigan). Two questions on mental health were added in 2012. A question on the number of mentally unhealthy days experienced by the respondent was taken from the Centers for Disease Control and Prevention's (CDC) Behavioral Risk Factor Surveillance System, and a question on suicidal or self-injurious ideation was modified from the Patient Health Questionnaire (Spitzer, Kroenke, & Williams, 1999). A question on military service and one on sexual identity were also added in 2012. The survey includes three questions on gambling behavior to assess the level and location of gambling among college students and negative consequences experienced by the students. The questions were taken from the Minnesota Student Survey (Stinchfield, Kushner, & Winters, 2005; Winters & Anderson, 2000), and used with the permission of the Minnesota Department of Education.

The survey is intended to provide meaningful data at both the campus and state levels, to understand substance use problems and develop effective plans for reducing substance use by college students. Each participating school receives a report of their results. Data from each participating school are the property of that institution, and are not released to the public. The online survey instrument can be accessed at http://www.drugs.indiana.edu/collegesurvey/?review_year=2013. Questions on the survey instrument are included at the end of this report.

All two- and four-year colleges in Indiana were invited to participate in the survey. Eleven colleges participated in the 2013 survey, including six public and five private schools. Participating schools could choose from either an online or paper format, with all schools using the online version. Students were surveyed over a two-week period, either before spring break or at least one month after spring break. The period immediately following spring break was avoided because of the historically higher rates of use during that time. Students received an e-mail invitation which included a link to the survey website, and a reminder e-mail midway through the

survey period. Incentives were offered by some schools to improve participation rates (e.g., gift cards, athletic tickets, etc.).

Selection of students was determined by the participating school. Some schools chose to survey a random sample of their population, while others surveyed an entire population of the student body; e.g., all students, all undergraduate students, etc. Participation in the survey was voluntary and anonymous. A total of 52,374 students were invited to participate in the 2013 Indiana College Substance Use Survey, with 6,660 students responding, for a response rate of 12.7%.

Table 2. Response Rate, 2013

Number of students invited to participate	Number of respondents	Response Rate
52,374	6,660	12.7%

Four criteria were used to clean the data. Surveys were discarded if any of the following conditions were met:

- missing gender information,
- missing age information,
- pharmacologically-implausible patterns of responses (i.e., a combination of drugs and frequencies of use whose cumulative effect would be lethal),
- inconsistent responses on substance use items across time measures (monthly vs. annually) for more than one-third of the substances queried.

A total of 548 surveys were rejected due to meeting at least one of the criteria, leaving 6,112 usable surveys (91.8%).

Table 3. Number of Usable Questionnaires, 2013

	Frequency	Percent
No gender reported	541	8.1
Missing/Inconsistent age responses	1	0.0
Inconsistent/Implausibly high substance use responses	6	0.1
Total number of usable surveys	6,112	91.8
Total	6,660	100.0

KEY FINDINGS

PREVALENCE AND FREQUENCY OF SUBSTANCE USE

PAST-YEAR PREVALENCE OF USE

More than eighty percent of the students who participated in the 2013 Indiana College Substance Use Survey (81.4%) reported drinking alcohol in the past year, including three-fourths of the students under 21 years of age (76.4%). These rates indicate the pervasiveness of alcohol among the college students participating in the survey. Over one-quarter of the students reported smoking tobacco with a hookah (27.9%) or cigarettes (27.5%), and slightly less reported smoking cigars (24.1%). One-third of the students (33.5%) reported using marijuana. Marijuana was the most widely used illicit drug, followed by use of prescription medication not prescribed to the student (12.7%). Annual prevalence rates for all investigated substances are provided in Table 4.

Male students used all of the substances in the past year at significantly higher rates than female students, except for alcohol. Two-fifths of the male students (39.5%) used marijuana in the past year, compared to 30.1% of the female students. Two in five male students (41.8%) smoked cigars, and one-third smoked cigarettes (34.5%) or smoked tobacco with a hookah (33.2%). One-fourth of the female students reported smoking cigarettes (23.5%) or tobacco with a hookah (25.0%) in the past year. Approximately one in six male students (16.4%) reported taking prescription medications not prescribed to them, compared to one in ten female students (10.6%). Female students reported a statistically higher rate of alcohol use in the past year (82.9% vs. 78.8% of male students).

Students 21 or older reported significantly higher rates of use in the past year for alcohol (87.2%) and cigarettes (30.1%), while younger students reported higher rates of marijuana use (35.7%), smoking tobacco with a hookah (30.8%), and smoking cigars (25.6%).

Table 4. Percentage of Students Reporting Use of Select Substances in the Past Year, by Select Demographic Characteristics, 2013

Substance	All Students			Gender		Age			Type of Institution	
	Indiana	U.S. ^a		Males	Females	Under 21	21 or Over		Private	Public
Cigarettes	27.5	23.4		34.5	23.5	***	30.1	***	19.4	30.2 ***
Cigars	24.1			41.8	14.2	***	22.5	**	21.5	25.0 **
Chewing/smokeless tobacco	6.9			16.3	1.6	***	7.1		7.1	6.9
Smoking tobacco with hookah/water pipe	27.9	25.7		33.2	25.0	***	30.8	***	22.2	29.9 ***
Alcohol	81.4	79.2		78.8	82.9	***	76.4	***	77.7	82.7 ***
Marijuana	33.5	34.9		39.5	30.1	***	35.7	***	21.3	37.7 ***
Cocaine	2.8	3.1		4.9	1.6	***	2.1	***	0.3	3.6 ***
Hallucinogens	6.9	4.5		11.0	4.6	***	6.8	7.0	2.9	8.3 ***
Heroin	0.3	0.1		0.6	0.2	**	0.2	0.5	0.2	0.4
Inhalants	0.8	1.5		1.1	0.6	*	0.7	0.9	0.4	0.9 *
Prescription medications not prescribed to student	12.7			16.4	10.6	***	13.0	12.3	8.5	14.1 ***
Medications prescribed to student, but misused	3.1			4.3	2.5	***	3.1	3.1	2.4	3.4
Over-the-counter medications misused	1.5			2.8	0.8	***	2.1	0.9	1.5	1.5
Methamphetamine	0.3	0.0		0.5	0.2	*	0.2	0.3	0.1	0.3
Other illegal drugs	1.8			3.4	0.9	***	2.2	1.5	1.2	2.1 *

^a National data are from the 2012 Monitoring the Future Survey, Johnston et al., 2013.

* $p < .05$, ** $p < .01$, *** $p < .001$

PAST-MONTH PREVALENCE OF USE

Slightly less than two-thirds of the Indiana students (63.4%) drank alcohol in the past month, including over half of the underage students (57.0%). Almost one in five of the surveyed students (18.3%) used marijuana in the past month, and 15.1% reported cigarette use. Following alcohol, tobacco and marijuana, misuse of prescription drugs was the next most widely used substance by the students in the past month, with 4.9% taking prescription medication not prescribed to them (Table 5).

Male college students reported statistically higher rates of use within the past month for most substances investigated in the survey. Approximately one-quarter of the male students (23.8%) reported using marijuana in the past month compared to 15.2% of the female students. Male students used all forms of tobacco at significantly greater rates, with one in five (19.8%) smoking cigarettes, 13.7% smoking cigars, 11.8% using a water pipe, and 7.8% using smokeless tobacco. One in eight of the females (12.4%) smoked cigarettes in the past month, and 7.2% smoked tobacco with a water pipe. Rates of alcohol use in the past month were not significantly different between the genders.

Students 21 or older reported higher rates of alcohol use (70.6%) and cigarette use (16.6%) in the past month, while younger students reported higher rates of cigar use (7.9%) and smoking tobacco with a hookah (9.7%). Students under 21 also reported a higher rate of marijuana use, with one-fifth of the underage students (19.8%) reporting the behavior in the past month, compared to 16.6% of the students 21 or older.

Table 5. Percentage of Students Reporting Use of Select Substances in the Past Month, by Select Demographic Characteristics, 2013

Substance	All Students			Gender		Age			Type of Institution			
	Indiana	U.S. ^a		Males	Females	Under 21	21 or Over		Private	Public		
Cigarettes	15.1	12.5		19.8	12.4	***	13.7	16.6	**	9.7	16.9	***
Cigars	6.8			13.7	2.9	***	7.9	5.5	***	6.3	6.9	
Chewing/smokeless tobacco	3.1			7.8	0.4	***	2.6	3.6	*	3.4	3.0	
Smoking tobacco with hookah/water pipe	8.9			11.8	7.2	***	9.7	8.0	*	7.5	9.4	*
Alcohol	63.4	67.7		62.2	64.0		57.0	70.6	***	61.0	64.2	*
Marijuana	18.3	20.5		23.8	15.2	***	19.8	16.6	**	10.6	21.0	***
Cocaine	0.9	1.1		1.6	0.4	***	0.6	1.2	*	0.3	1.1	**
Hallucinogens	1.8	1.1		2.8	1.2	***	2.1	1.4	*	0.9	2.0	**
Heroin	0.1	0.1		0.1	0.1		0.0	0.1		0.0	0.1	
Inhalants	0.2	0.2		0.4	0.2		0.2	0.3		0.1	0.3	
Prescription medications not prescribed to student	4.9			6.8	3.8	***	5.1	4.6		3.2	5.4	***
Medications prescribed to student, but misused	1.0			1.2	0.9		0.9	1.2		0.8	1.1	
Over-the-counter medications misused	0.4			0.6	0.3		0.5	0.3		0.6	0.4	
Methamphetamine	0.1	0.0		0.1	0.1		0.1	0.1		0.0	0.1	
Other illegal drugs	0.5			0.8	0.3	**	0.7	0.2	**	0.4	0.5	

^a National data are from the 2012 Monitoring the Future Survey, Johnston et al., 2013.

* $p < .05$, ** $p < .01$, *** $p < .001$.

PREVALENCE OF BINGE DRINKING

Binge drinking was defined in the Indiana College Substance Use Survey as four or more drinks in one sitting for females and five or more drinks in one sitting for males. This gender-specific standard follows the definition established by the National Institute on Alcohol Abuse and Alcoholism (NIAAA, 2004). As a group, college students are significantly more likely to binge drink than non-college peers (Johnston, O'Malley, Bachman, & Schulenberg, 2009). Students who binge drink experience significantly more adverse consequences than those who do not. One study found that college students who binge drank occasionally were five times more likely to experience five or more alcohol-related problems compared to students who did not binge drink. Students who were frequent binge drinkers (binge drinking three or more times in the past two weeks) were 4 to 15 times more likely to experience a particular problem than non-binge drinkers (Wechsler, Lee, Kuo, & Lee, 2000).

The 2013 Indiana College Substance Use Survey included two questions on binge drinking: in the past month and in the past two weeks. Half of the students who participated in the 2013 survey (49.8%) reported binge drinking in the past month. Male students reported a higher prevalence rate than female students (53.9% vs. 47.5%, respectively), as did students 21 years or older (52.4% vs. 47.5% of underage students), and students at public institutions (51.4%, compared to 45.1% of students attending private institutions) (Table 6).

Two-fifths of the surveyed students (40.9%) reported binge drinking in the past two weeks, with 46.9% of the male students reporting the behavior compared to 37.5% of the female students (Table 7). Over one-fourth of the students (26.2%) reported binge drinking once or twice in the past two weeks, while 14.8% reported doing so three or more times (Figure 1).

Table 6. Percentage of Students Reporting Binge Drinking in the Past Month, by Select Demographic Characteristics, 2013

All Students	Gender			Age			Type of Institution		
	Males	Females		Under 21	21 or Over		Private	Public	
49.8	53.9	47.5	***	47.5	52.4	***	45.1	51.4	***

Note. Binge drinking was defined as consuming 4 or more drinks in one sitting for females and 5 or more drinks in one sitting for males.

*** $p < .001$

Table 7. Percentage of Students Reporting Binge Drinking in the Past Two Weeks, by Select Demographic Characteristics, 2013

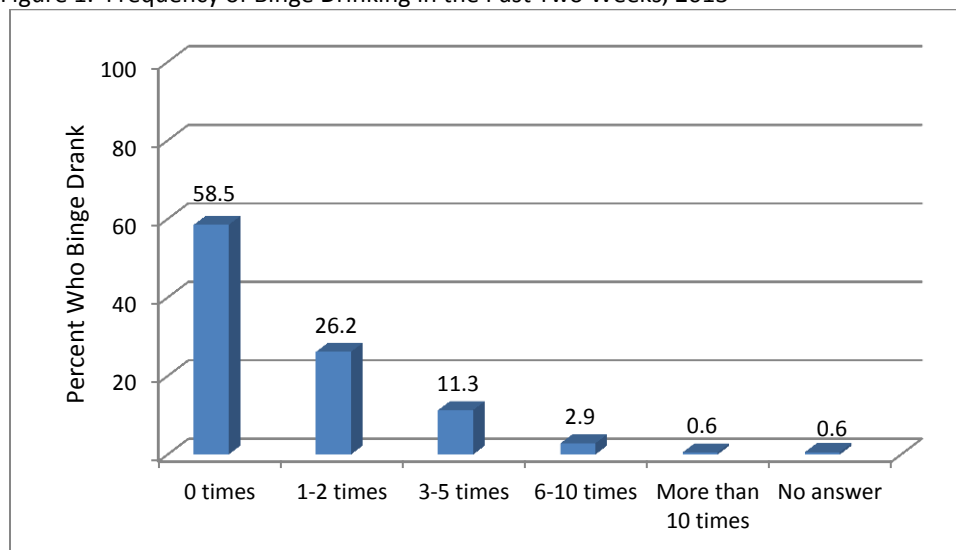
All Students		Gender			Age			Type of Institution		
Indiana	U.S. ^a	Males	Females		Under 21	21 or Over		Private	Public	
40.9	37.4	46.9	37.5	***	39.0	43.1	**	37.4	42.1	**

Note. Binge drinking was defined as consuming 4 or more drinks in one sitting for females and 5 or more drinks in one sitting for males.

^a National data are from the 2012 Monitoring the Future Survey, Johnston et al., 2013.

** $p < .01$, *** $p < .001$

Figure 1. Frequency of Binge Drinking in the Past Two Weeks, 2013



PRESCRIPTION DRUG MISUSE

According to the Office of National Drug Control Policy, prescription drug abuse is the nation's fastest-growing drug problem (ONDCP, n.d.). College students report higher rates of non-medical use of Adderall and Ritalin than their same-age peers not attending college (Johnston et al., 2013). Among the students participating in the Indiana College Substance Use Survey, Adderall was the most commonly misused prescription medication. Research indicates that the predominant motives reported by college students for misusing prescription stimulants (such as Adderall or Ritalin) are in order to study, improve their concentration, and to stay alert (Teter, McCabe, LaGrange, Cranford, & Boyd, 2006), although nonmedical use of prescription stimulants is associated with lower academic performance (Arria, O'Grady, Caldeira, Vincent, & Wish, 2008; Garnier-Dykstra, Caldeira, Vincent, O'Grady, & Arria, 2012). In a recent study of over 10,000 randomly selected college students from over 100 universities, students reporting past year nonmedical prescription stimulant use were ten times more likely to report marijuana use in the past year, almost seven times more likely to report frequent binge drinking, over 20 times more likely to report cocaine use in the past year, and over five times more likely to report driving after binge drinking than college students who had not used prescription stimulants non-medically (McCabe, Knight, Teter, & Wechsler, 2005).

One in ten of the Indiana students (10.1%) reported misusing Adderall in the past six months. Male students and students at public institutions were more likely to misuse Adderall than their counterparts. Approximately one in seven male students (13.9%) reported misusing Adderall in the past six months, and approximately one in nine students attending public institutions (11.3%) did so. Vicodin and Xanax were the next most commonly misused medications, with 3.6% and 3.5% of the students misusing them in the past six months, respectively. Male students misused most of the prescription medications at significantly higher rates than female students (Table 8).

Table 8. Percentage of Students Reporting Prescription Drug Misuse in the Past Six Months, by Select Demographic Characteristics, 2013

Substance	All Students	Gender			Age			Type of Institution		
		Males	Females		Under 21	21 or Over		Private	Public	
Adderall	10.1	13.9	7.9	***	10.6	9.5		6.5	11.3	***
Ritalin	1.7	2.9	1.1	***	2.2	1.2	**	0.9	2.0	**
Xanax	3.5	4.9	2.7	***	3.1	3.9		1.6	4.1	***
Codeine	2.7	4.2	1.8	***	3.2	2.0	**	1.7	3.0	**
Vicodin	3.6	5.4	2.5	***	3.4	3.7		2.4	4.0	**
Lortab	1.5	1.8	1.4		1.0	2.1	**	1.2	1.6	
Percocet	0.9	1.4	0.6	**	0.8	0.9		0.6	0.9	
Oxycontin	1.3	1.8	1.0	*	1.7	0.9	*	1.0	1.4	
Morphine	0.4	0.6	0.3		0.3	0.5		0.3	0.4	
Methadone	0.2	0.2	0.1		0.1	0.2		0.1	0.2	
Steroids	0.1	0.2	0.1		0.0	0.2	*	0.2	0.1	

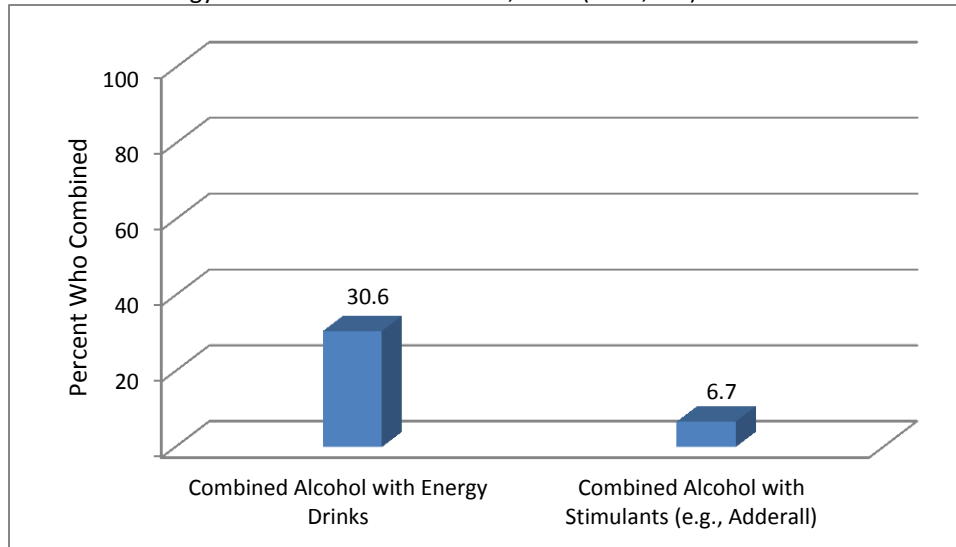
* $p < .05$, ** $p < .01$, *** $p < .001$

COMBINING ALCOHOL WITH ENERGY DRINKS OR OTHER STIMULANTS

College students often cite the desire to counteract the sedative effects of alcohol as a reason for combining it with energy drinks. These students intentionally choose to combine the two in order to be able to drink more alcohol (Marczinski, 2011). Students who mix alcohol and energy drinks consume more alcohol, and experience higher rates of alcohol-related consequences. These include higher prevalence of being taken advantage of sexually, taking advantage of another student sexually, riding in an automobile with a driver under the influence of alcohol, being hurt or injured, and requiring medical treatment (O'Brien, McCoy, Rhodes, Wagoner, & Wolfson, 2008).

Three in ten of the students participating in the Indiana survey who drank alcohol in the past six months (30.6%) reported combining it with energy drinks, and 6.7% combined it with other stimulants, such as Adderall (Figure 2).

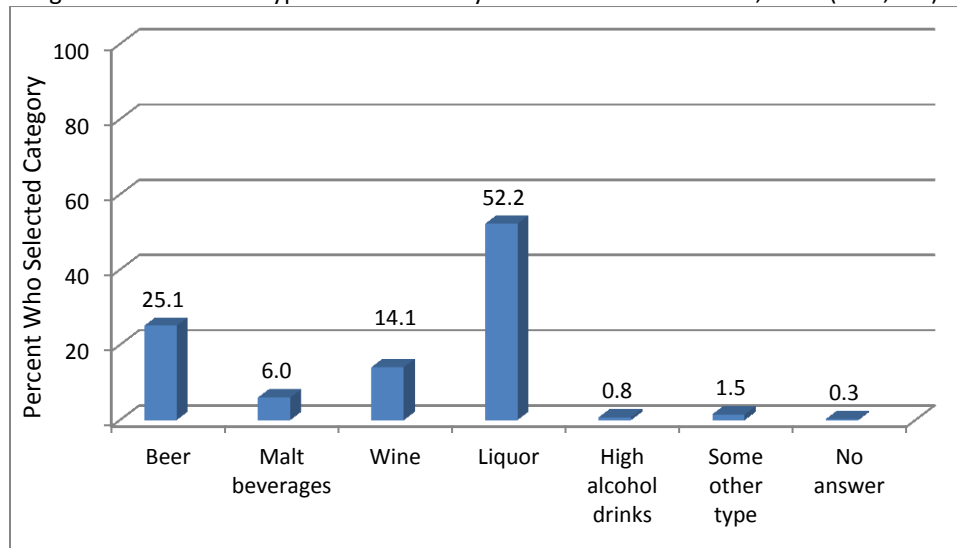
Figure 2. Percentage of Students Who Drank Alcohol in Past Six Months, Who Combined Alcohol with Energy Drinks or Other Stimulants, 2013 (n = 4,926)



USUAL TYPE OF ALCOHOL

Over half of the students who drank alcohol in the past six months (52.2%) indicated that liquor was the most common type of alcohol they consumed. One-quarter of the students (25.1%) indicated that beer was the usual type of alcohol they consumed (Figure 3).

Figure 3. Percentage of Students Who Drank Alcohol in Past Six Months, Who Reported Select Categories as the Usual Type of Alcohol They Drank in the Past Month, 2013 (n =4,926)



REASONS FOR ALCOHOL USE

Almost nine in ten of the students who drank alcohol in the past six months (86.0%) reported doing so in order “to have a good time with my friends”. Nearly two-thirds of the students (61.1%) reported drinking alcohol “to relax or relieve tension”, and approximately half (46.8%) did so “to feel good or get high”. Over half of the students (56.0%) said they drink alcohol “because it tastes good”, while one in five students (20.2%) indicated that they used alcohol because of “boredom/nothing else to do” (Table 9).

Male students were more likely to indicate drinking alcohol for most of the reasons investigated, except “to experiment”, which more female than male students indicated (22.4% vs. 18.3%, respectively).

Students under 21 years old were more likely to report drinking alcohol for many of the reasons investigated, including “to feel good or get high” (50.5%) and “to experiment” (28.4%), while students 21 or older reported higher rates of drinking alcohol “to relax or relieve tension” (66.3%), and “because it tastes good” (65.7%).

Students at public institutions reported higher rates of drinking alcohol for many of the reasons investigated. Almost half of the students at public institutions who drink alcohol (49.0%) reported drinking “to feel good or get high”, compared to two-fifths of the students at private institutions who drink (40.1%). Students attending private institutions reported drinking “to experiment” and “because it tastes good” more frequently than those attending public institutions.

Table 9. Percentage of Students Who Drank Alcohol in Past Six Months, Who Indicated Select Reasons for Drinking Alcohol, by Select Demographic Characteristics, 2013 (n = 4,926)

Substance	All Students	Gender		Age		Type of Institution	
		Males	Females	Under 21	21 or Over	Private	Public
To experiment	21.0	18.3	22.4 **	28.4	13.7 ***	27.4	18.9 ***
Because I am "hooked"	2.3	2.8	2.0	1.9	2.7	1.4	2.6 *
To relax or relieve tension	61.1	62.7	60.3	55.9	66.3 ***	59.4	61.7
To feel good or get high	46.8	53.0	43.4 ***	50.5	43.2 ***	40.1	49.0 ***
To seek deeper insights and understanding	6.7	11.1	4.2 ***	7.4	6.0	6.5	6.7
To have a good time with my friends	86.0	86.5	85.7	86.7	85.3	84.1	86.6 *
To fit in with a group I like	12.7	16.2	10.8 ***	14.6	10.9 ***	9.6	13.7 ***
Boredom, nothing else to do	20.2	25.4	17.4 ***	21.7	18.8 *	20.2	20.3
Because of anger or frustration	14.8	15.3	14.5	14.3	15.3	14.5	14.9
To get through the day	3.4	4.3	2.9 **	3.4	3.4	3.5	3.4
To increase the effects of other drugs	3.7	6.5	2.2 ***	4.5	3.0 **	2.2	4.2 **
To decrease the effects of other drugs	1.4	2.4	0.8 ***	1.6	1.2	0.5	1.7 **
To get to sleep	9.3	12.4	7.6 ***	7.0	11.5 ***	7.2	10.0 **
Because it tastes good	56.0	58.4	54.6 *	46.1	65.7 ***	59.1	55.0 *
To get away from my problems	14.2	14.2	14.3	15.5	13.0 *	13.3	14.5

* $p < .05$, ** $p < .01$, *** $p < .001$

CONSEQUENCES OF SUBSTANCE USE

Consequences resulting from alcohol use include violence, unintentional injuries, risky sexual behavior, diminished academic performance, and use of other drugs. Many times the negative consequences from college students' alcohol use affect not only the individuals consuming the alcohol but those around them as well (NIAAA, 2004/2005; Weschler & Nelson, 2008). Researchers estimated that alcohol-related problems experienced by 18-24 year old U.S. college students in 2005 included 1,825 student deaths from alcohol-related injuries and approximately 599,000 unintentional injuries while under the influence of alcohol. The researchers estimated the level of violence associated with alcohol use by college students to be approximately 696,000 students assaulted by other students who had been drinking, including 97,000 sexual assaults (Hingson, Zha, & Weitzman, 2009).

The Indiana College Substance Use Survey asked students to indicate the number of times they experienced select consequences due to their drinking or drug use. Three in five of the students who drank alcohol within the past six months (60.5%) reported having had a hangover, and almost one-third (29.6%) reported blacking out (forgetting where they were or what they did). Almost one in five of the students (17.4%) reported missing class or an assignment as a result of their drinking, and approximately one in eight had driven a car while under the influence (13.1%) and engaged in risky sexual behavior (13.3%) (Table 10).

Over one-third of the students who used drugs in the past six months (35.3%) reported driving a car while under the influence, and a similar number (34.7%) reported abusing more than one drug at a time. Sixteen percent of the students who used drugs in the past six months (16.4%) missed class or an assignment due to their drug use, and 13.0% reported having blackouts or flashbacks (Table 11).

Table 10. Percentage of Students Who Drank Alcohol in the Past Six Months, Who Reported Select Consequences as a Result of Their Drinking, 2013 (n =4,926)

Consequence	%
Friends or family members worried or complained about your drinking	13.0
Had a hangover	60.5
Felt bad or guilty about your drinking	29.2
Been unable to stop drinking when you wanted to	8.0
Created problems between you and your friends or family members	10.5
Gotten into trouble at work or school because of drinking	3.3
Gone to anyone for help to reduce your drinking	1.3
Been hurt or injured because of your drinking	11.5
Been ticketed or arrested because of your drinking	2.0
Been arrested for drunk driving	0.3
Driven a car while under the influence	13.1
Gotten into physical fights when drinking	4.0
Experienced unwanted sexual attention such as being touched when you don't want to be, forced kissing, etc.	10.5
Engaged in risky sexual behavior such as having unprotected sex or sex with someone you just met because you were drinking	13.3
Missed class or an assignment	17.4
Forgot where you were or what you did (blacked out)	29.6

Table 11. Percentage of Students Who Used Drugs in the Past Six Months, Who Reported Select Consequences as a Result of Their Drug Use, 2013 (n = 1,339)

Consequence	%
Abused more than one drug at a time	34.7
Been unable to stop using drugs when you wanted to	9.6
Had blackouts or flashbacks as a result of drug use	13.0
Felt bad or guilty about your drug use	28.9
Had friends or family members worry or complain about your drug use	13.4
Created problems between you and your friends or family members	10.0
Engaged in illegal activities in order to obtain drugs	9.9
Gotten into physical fights because you were using drugs	1.1
Experienced withdrawal symptoms (felt sick) when you stopped taking drugs	7.5
Had medical problems as a result of your drug use (e.g., memory loss, infections, convulsions, bleeding)	4.6
Driven a car while under the influence of drugs	35.3
Gotten in trouble at work or school because of your drug use	3.1
Been in vulnerable situations (e.g., could have been hurt and/or date raped when using drugs)	6.0
Engaged in risky sexual behavior such as having unprotected sex or sex with someone you just met because you were using drugs	8.7
Failed a class because of drug use	1.8
Missed class or an assignment due to drug use	16.4

RISK FACTORS

AGE OF FIRST USE

Early onset of substance use is correlated with a range of substance-related problems, including involvement in motor vehicle crashes, unintentional injuries, and alcohol and/or drug dependence (Behrendt, Wittchen, Hofler, Lieb, & Beesdo, 2009; Hingson & Wenxing, 2009). Individuals who begin drinking in their mid-teens are four times more likely to become alcohol dependent during their lifetime compared to those who do not drink before the age of 21 (Grant & Dawson, 1998). The Indiana College Substance Use Survey asked students how old they were when they first used select substances. Responses consisted of two-year intervals for ages 10 through 17 (i.e., 10-11 years, 12-13 years, etc.), a three-year interval for students aged 18 through 20, a four-year interval for ages 21 through 25, and open-ended ranges for extreme responses ("under 10" or "26+"). The mean age of first use was calculated using the midpoints of the intervals and the upper and lower endpoints for the extreme responses.

The mean age of first time use of inhalants was the lowest of all substances investigated, at 15.8 years, followed by over-the-counter medication misuse (16.6 years) and cigarettes (16.8 years). Male students initiated use of cigars, alcohol, and marijuana at significantly earlier average ages than female students. Students at public institutions first used cigarettes, cigars, hookah pipes, and alcohol at younger average ages than students at private institutions, while students attending private institutions reported earlier average ages of first use of cocaine and methamphetamine (Table 12).

Table 12. Average Age of First Time Use of Select Substances, by Select Demographic Characteristics, 2013

Substance	All Students	Gender			Type of Institution		
		Males	Females		Private	Public	
Cigarettes	16.8	16.9	16.8		17.2	16.8	**
Cigars	17.7	17.5	17.9	***	18.2	17.6	***
Chewing/smokeless tobacco	17.1	17.1	17.3		17.3	17.1	
Smoking tobacco with hookah/water pipe	18.1	18.0	18.2		18.3	18.1	**
Alcohol	17.1	17.0	17.1	*	17.6	16.9	***
Marijuana	17.2	17.0	17.4	***	17.4	17.2	
Cocaine	19.0	19.3	18.7		17.9	19.1	*
Hallucinogens	18.5	18.6	18.5		18.8	18.5	
Heroin	17.9	18.2	17.2		17.8	17.9	
Inhalants	15.8	16.1	15.5		15.2	15.9	
Prescription medications not prescribed to student	17.8	17.9	17.7		17.7	17.8	
Medications prescribed to student, but misused	17.4	17.5	17.4		17.3	17.5	
Over-the-counter medications misused	16.6	16.7	16.3		16.9	16.5	
Methamphetamine	17.7	18.7	16.4	**	16.5	17.7	*
Other illegal drugs	17.6	17.8	17.2		17.5	17.6	

Note. Average age of first use is based on students who reported ever having used the substance. Average age was calculated using the mid-points of the age ranges provided, and the upper and lower endpoints for the extreme responses.

* $p < .05$, ** $p < .01$, *** $p < .001$

ALCOHOL AVAILABILITY

College students' access to alcohol is correlated with increased levels of drinking (Wechsler, Kuo, Lee, & Dowdall, 2000). Students under 21 routinely report that alcohol is easy to obtain from a variety of sources (Brown, Matousek, & Radue, 2009; Fabian, Toomey, Lenk, & Erickson, 2008; Wechsler, Lee, Nelson, & Kuo, 2002). To help understand how underage students obtain alcohol, the Indiana survey asked underage students who drink alcohol to identify the three easiest ways they obtain it. Over half of the students (51.1%) reported that older friends were the easiest way to get alcohol, and almost three-fourths of the students (72.1%) listed older friends as one of the top two ways. "Off-campus private parties" was the most common response for both the second and third easiest method for obtaining alcohol. Half of the survey respondents (50.2%) selected off-campus private parties as one of the top three easiest ways to access alcohol (Table 13). These data highlight the substantial role that older friends and acquaintances play in how underage students obtain alcohol, and underscore the importance of targeting this group when trying to reduce underage students' access to alcohol.

Students under 21 who drank alcohol in the past year were asked if they had purchased alcohol from a retailer in the past six months, with approximately one in ten students (9.2%) reporting that they had (Figure 4). Of those students, 46.1% reported that purchasing it without being asked for ID was the most common method they used for buying it. Slightly less than one-third of the students who had purchased alcohol from a retailer (31.3%) said that using a fake ID was the most common method they used, while one-fifth of the students (20.4%) indicated that using someone else's ID was the most common method (Figure 5).

Figure 6 shows the locations underage students listed as the easiest place to purchase alcohol, with bars being selected most often (31.3%), followed by restaurants (29.1%).

Table 13. Three Easiest Ways of Getting Alcohol as Reported by Students Who Are Under 21 and Who Drink Alcohol, 2013 (n = 2,489)

	Most common response	2 nd most common response	3 rd most common response
First Easiest	Older friends (51.1%)	Fraternity or sorority houses (15.4%)	Off-campus private parties (7.8%)
Second Easiest	Off-campus private parties (24.7%)	Older friends (21.0%)	Fraternity or sorority houses (12.3%)
Third Easiest	Off-campus private parties (17.7%)	Someone else on campus (14.2%)	On-campus parties (12.7%)

Note. Underage students who reported alcohol use in the past month or in the past year are included. Students were asked to identify the first, second, and third easiest ways that they obtain alcohol. The top three responses in each category are reported in the table.

Figure 4. Percentage of Students Under 21 Who Drink Alcohol, Who Reported Purchasing Alcohol from a Retailer in the Past Six Months, 2013 (n = 2,489)

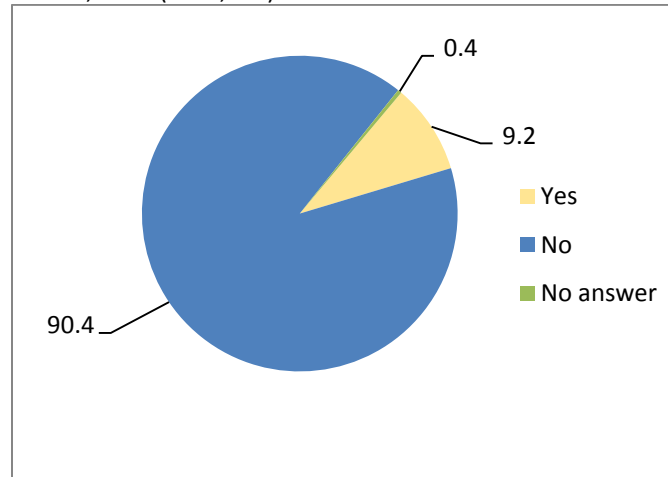


Figure 5. Percentage of Students Under 21 Who Have Purchased Alcohol from a Retailer, Who Reported Select Methods as the Most Common for Purchasing Alcohol, 2013 (n = 230)

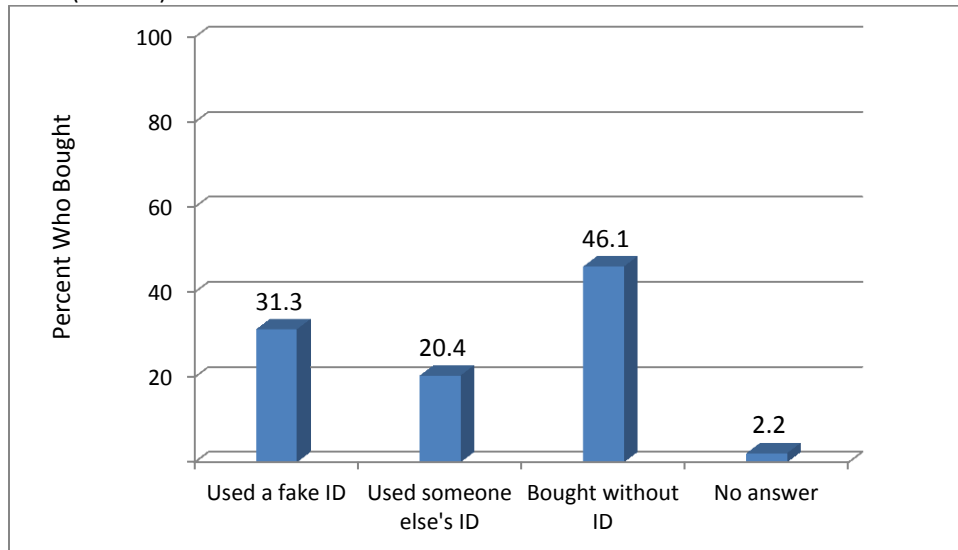
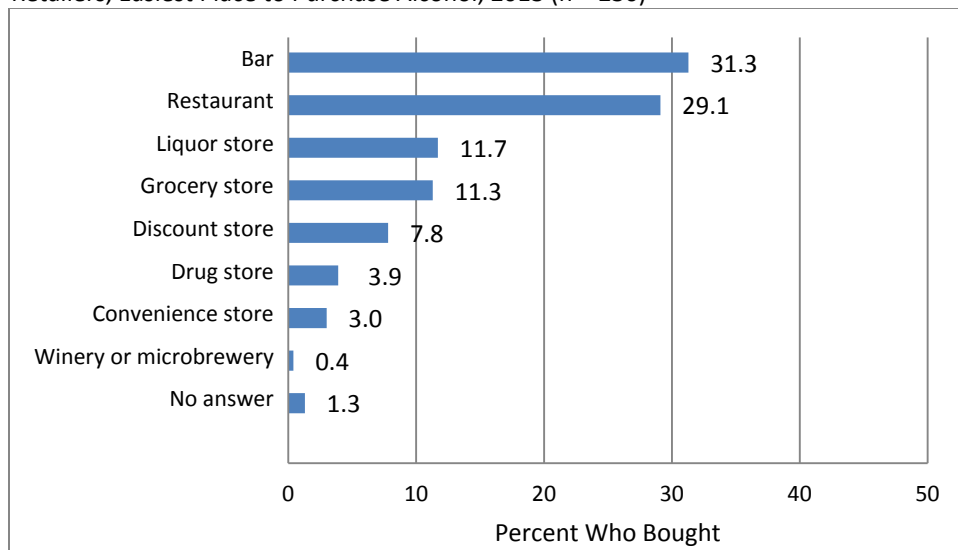


Figure 6. Percentage of Students Under 21 Who Reported Purchasing Alcohol from Retailers, Easiest Place to Purchase Alcohol, 2013 (n = 230)



PERCEPTIONS OF PEER BEHAVIORS AND BELIEFS

Many college students overestimate both the amount of drinking and drug use, and the approval of use by their peers (Borsari & Carey, 2003; Martens et al., 2006). These misperceptions have been shown to be positively correlated with the student's own drinking and drug use levels. Students who believe their peers drink or use drugs are more likely to drink or use drugs themselves (Kilmer et al., 2006; Neighbors, Lee, Lewis, Fossos, & Larimer, 2007; Perkins, Haines, & Rice, 2005). The Indiana College Substance Use Survey asked students how many alcoholic drinks they thought the typical student at their school had the last time he or she partied/socialized. Students could provide any figure between 0 – 30. The average of the responses was 5.8 drinks (Table 14). Half of the students (49.7%) believed the typical student drank five or more alcoholic drinks the last time he or she partied/socialized, which is above the threshold for binge drinking (Figure 7). Male students and students under 21 estimated significantly higher numbers of drinks on average than female and older students.

The survey also asked participants how they thought other students on their campus felt about using certain substances. Only 13.4% of the students thought their peers would disapprove (somewhat or strongly) of trying marijuana once or twice, and only one in five (20.4%) thought their peers would disapprove of smoking it occasionally. Less than half (43.3%) thought their peers would disapprove of smoking marijuana regularly. Slightly more than two-fifths of the students (41.5%) thought their peers would disapprove of having five or more drinks in one sitting, and approximately one-third (36.7%) thought their peers would disapprove of taking one or two drinks nearly every day (Table 15).

Table 14. Mean Number of Drinks Respondents Thought the Typical Student Consumed the Last Time He/She "Partied/Socialized", by Select Demographic Characteristics, 2013 (range = 0 – 30)

	All Students	Gender			Age		Type of Institution		
		Males	Females		Under 21	21 or Over	Private	Public	
Mean	5.8	5.9	5.7 *		5.9	5.7	5.5	5.9	***
Standard Deviation	3.3	3.6	3.1		3.4	3.2	3.0	3.4	

* $p < .05$, * $p < .01$, *** $p < .001$

Figure 7. Percentage of Students Who Indicated Select Number of Drinks Consumed by the Typical Student the Last Time He/She “Partied/Socialized”, 2013 (range = 0 – 30)

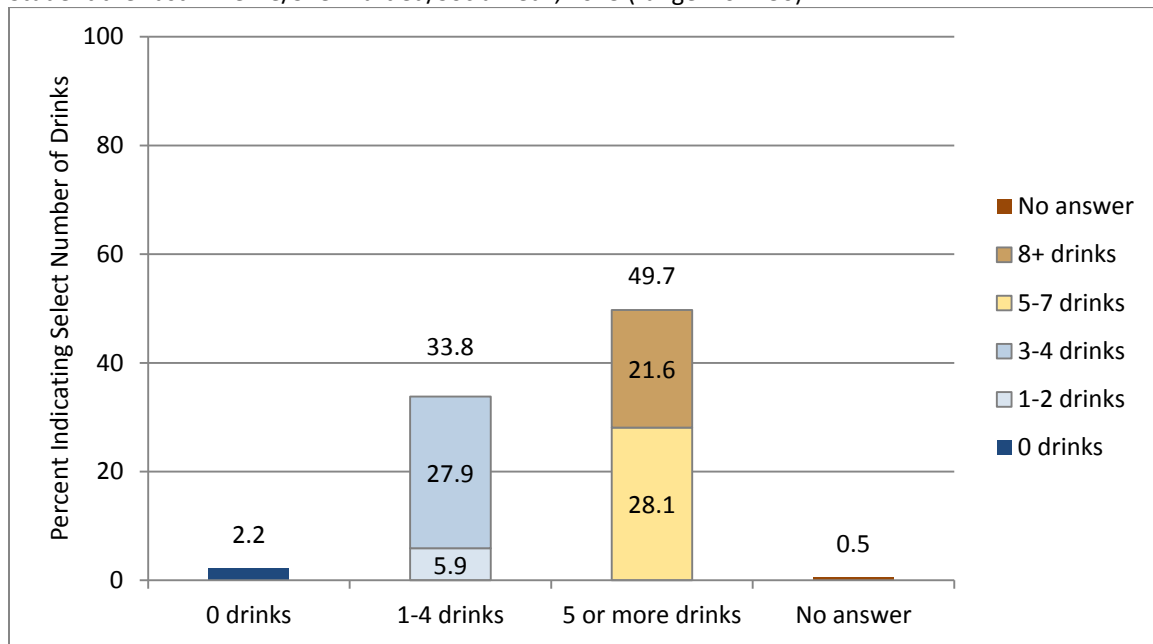


Table 15. Percentage of Students Who Thought Other Students on Campus Would Approve or Disapprove of Select Behaviors, 2013

	Strongly approve	Somewhat approve	Neither approve or disapprove	Somewhat disapprove	Strongly disapprove	No answer
Trying marijuana once or twice	23.6	37.3	25.3	6.1	7.3	0.5
Smoking marijuana occasionally	14.3	35.5	29.1	11.4	9.0	0.7
Smoking marijuana regularly	6.7	19.8	29.4	26.8	16.4	0.8
Trying cocaine once or twice	1.6	6.6	16.3	33.9	40.9	0.8
Taking cocaine regularly	1.0	1.8	8.9	16.8	70.5	1.1
Trying amphetamines (e.g., Adderall, Ritalin) once or twice	9.8	23.1	25.7	17.0	23.7	0.7
Taking amphetamines regularly	3.3	10.3	20.7	22.9	41.5	1.3
Having one or two alcoholic drinks nearly every day	9.8	23.3	29.5	23.5	13.2	0.7
Having three or four alcoholic drinks nearly every day	4.1	11.8	21.1	29.7	32.6	0.6
Having five or more alcoholic drinks in one sitting	10.6	21.2	26.0	17.8	23.7	0.8
Taking steroids for body building or improved athletic performance	1.7	6.3	22.1	27.5	41.6	0.8

Mental health problems are widespread among college students, and most college counseling professionals believe that the number of students with significant mental health needs is increasing (Substance Abuse and Mental Health Services Administration [SAMHSA], 2007b). Several aspects of college life can contribute to emotional distress experienced during this period, including transitioning from high school to college, exposure to new social situations, and heightened academic performance expectations. Mental health problems that increase during this age period include depression, anxiety, suicidal ideation, and delinquent behaviors (Brown et al., 2008). According to the Suicide Prevention Resource Center, one-fifth of college students experience a mental illness, and an increasing number of students are receiving mental health services before starting their college careers (Suicide Prevention Resource Center, 2004). Self-report surveys reveal that over half of college students have experienced feelings of depression or hopelessness, 10% have considered suicide, and 1% has attempted it. Over 1,000 college students die by suicide each year (SAMHSA, 2007b). Depression and anxiety increase the risk for alcohol involvement and related problems. There is some evidence to suggest this linkage may be bidirectional; intensive and protracted substance use may be a factor in the development of depression and anxiety (Brown et al., 2007; Moritsugu & Li, 2008; SAMHSA, 2007a).

Two questions to assess mental health status were asked on the Indiana College Substance Use Survey. Students were asked on how many days in the past month their mental health was not good, including experiencing stress, depression, or problems with emotions. The average response was 5.9 days. Female students reported more mentally unhealthy days (average of 6.5 days compared to an average of 4.6 days for male students), as did students under 21 years of age (6.1 days on average, compared to a mean of 5.6 days for older students) (Table 16).

One in seven of the students (14.3%) indicated that they had thought they would be better off dead or of hurting themselves in some way in the past 2 weeks. Female students and students under 21 reported higher rates of self-harming or suicidal thoughts. Fifteen percent of the female students (15.2%) indicated having such thoughts, compared to 12.9% of the male students. Similar differences were found by age, with 15.9% of the students under 21 years of age reporting such thoughts, compared to 12.6% of the older students (Table 17).

Table 16. Mean Number of Mentally Unhealthy Days During the Past Month, by Select Demographic Characteristics, by Select Demographic Characteristics, 2013 (range = 0 – 30)

	All Students	Gender			Age			Type of Institution	
		Males	Females		Under 21	21 or Over		Private	Public
Mean	5.9	4.6	6.5	***	6.1	5.6	*	5.7	5.9
Standard Deviation	7.3	6.9	7.5		7.4	7.3		7.1	7.4

Note. Survey question: "Thinking about your mental health, which includes stress, depression, and problems with emotions, for how many days during the past 30 days was your mental health not good?"

* $p < .05$, ** $p < .01$, *** $p < .001$

Table 17. Percentage of Students Reporting Self-Harming or Suicidal Thoughts in the Past Two Weeks, by Select Demographic Characteristics, by Select Demographic Characteristics, 2013 (range = 0 – 14)

All Students	Gender			Age			Type of Institution	
	Males	Females		Under 21	21 or Over		Private	Public
14.3	12.9	15.2	**	15.9	12.6	***	13.5	14.6

Note. Survey question: "On how many days in the past 2 weeks have you had thoughts that you would be better off dead or hurting yourself in some way?"

* $p < .05$, ** $p < .01$, *** $p < .001$

GAMBLING BEHAVIORS

Opportunities for gambling increased rapidly since the 1990's. In 1989 the State of Indiana began operating the Hoosier Lottery. River boat casinos and horse tracks were approved by the Indiana legislature in the mid-1990s, and in 2007 the State allowed slot machines to be placed in horse parks. The advent of online gambling and the rapid growth in the popularity of poker have also added to the current environment of gambling. A recent national survey of 18-21 year olds (Barnes, Welge, Hoffman & Tidwell, 2010) found that 75% of the college students reported gambling in the past year, which was similar to the rate reported by the non-college young adults surveyed. The rate of frequent gambling (weekly or more) was lower for U.S. college students (18%) than their non-college peers (25%). Male college students reported significantly higher prevalence rates of gambling (83% vs. 67%) and frequent gambling (31% vs. 6%) than the female students.

The most common form of gambling reported by students participating in the 2013 Indiana College Substance Use Survey was playing the lottery (28.9%), followed by playing cards at home (14.0%). Male Indiana students reported higher rates of gambling than female students for all gambling behaviors investigated. Almost one-fourth of the male students (23.4%) played cards at home for money in the past year, compared to 8.7% of the female students. Over one in five of the male students (22.6%) gambled in betting pools and nearly one in five (17.7%) bet on fantasy sports. Almost one-quarter of the students 21 or older reported gambling at a casino (22.9%) (Table 18).

Students were asked how frequently they gambled to assess the level of excessive gambling. Less than one percent of the students reported participating in any of the gambling behaviors at least once a week in the past year (Figure 8). The most frequent location that students reported for gambling (other than online or playing the lottery) was at a casino (9.7%), followed by an apartment or house (6.2%) (Figure 9). The most common negative consequence of gambling reported by Indiana students was feeling bad about their gambling (3.5%), followed by financial issues (1.6%) (Table 19).

Table 18. Percentage of Students Reporting Gambling Behaviors in the Past Year, by Select Demographic Characteristics, 2013

Gambling Behavior	All Students	Gender		Age		Type of Institution				
		Males	Females	Under 21	21 or Over	Private	Public			
Played cards at home	14.0	23.4	8.7	***	13.7	14.3	12.6	14.5		
Gambled at a casino	12.7	15.4	11.2	***	3.8	22.9	***	12.0	13.0	
Gambled on-line	1.3	3.0	0.3	***	0.9	1.7	**	0.9	1.4	
Gambled at informal locations (e.g., street corners, gambling houses)	1.1	2.1	0.5	***	1.0	1.1		1.0	1.1	
Bet on fantasy football/basketball	8.2	17.7	2.8	***	7.7	8.8		7.4	8.5	
Betting pools (e.g., March Madness)	11.4	22.6	5.1	***	10.9	12.0		10.6	11.7	
Lottery	28.9	32.1	27.1	***	26.9	31.2	***	28.0	29.2	
Placed bet with bookie	1.5	3.2	0.5	***	1.3	1.6		0.8	1.7	*

* $p < .05$, ** $p < .01$, *** $p < .001$

Figure 8. Percentage of Students Who Reported Weekly or More Frequent Gambling in the Past Year, by Gambling Category, 2013

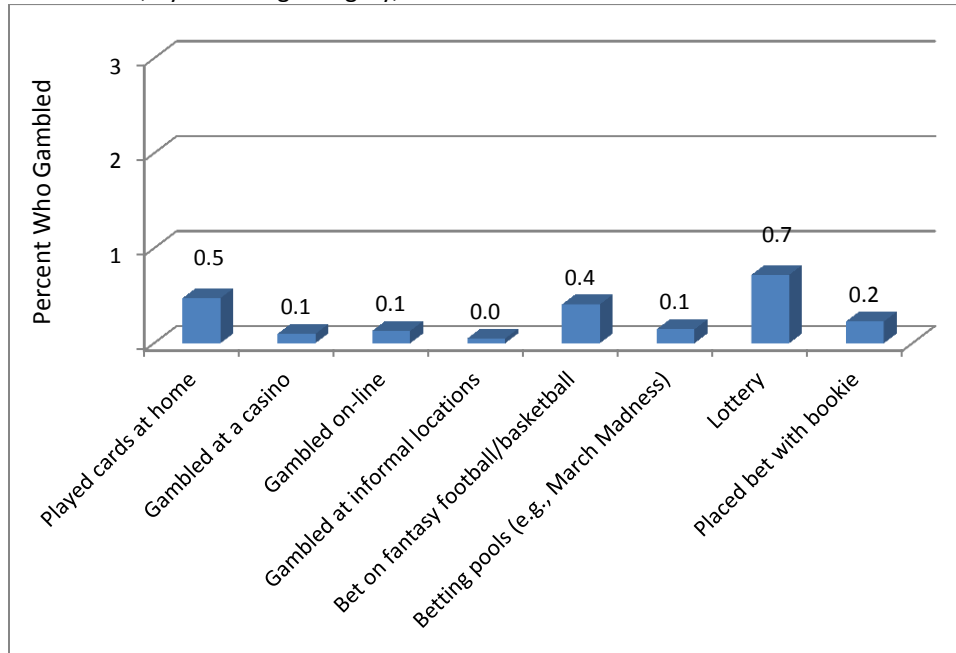


Figure 9. Most Frequent Gambling Location (Other Than Online or Lottery) in Past Year, 2013

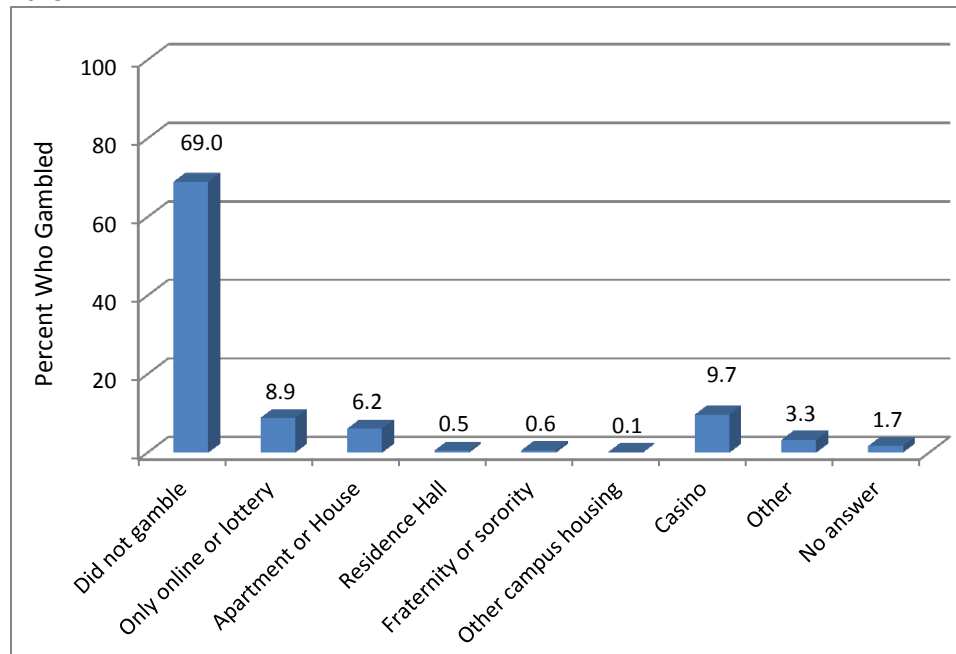


Table 19. Percentage of Students Who Gambled in the Past Year, Who Reported Select Consequences as a Result of Their Gambling, 2013 (n = 2,595)

Consequence	%
Academic problems (missed class, did poorly on exam, lower grades)	0.3
Issues with legal system	0.1
Financial issues	1.6
Felt bad about gambling	3.5
Poor physical health (sleep issues, depression, poor nutrition, poor hygiene)	0.4
Issues with friends and family (lied, strained relationships, arguments)	0.7

CHARACTERISTICS OF SURVEY PARTICIPANTS

Almost two-thirds of the survey respondents are female (63.9%) and slightly more than half (53.2%) are younger than 21 years of age. Over four-fifths of the students (84.1%) are White and most (95.5%) are non-Hispanic. Respondents were nearly evenly divided among freshmen, sophomores, juniors, and seniors. Over ninety percent (93.4%) were full-time students and slightly more than half (50.9%) lived on-campus. Three-fourths of the students (74.5%) attend public institutions.

Table 20. Demographic Characteristics of Survey Participants, 2013

	Frequency	%
Gender		
Male	2,205	36.1
Female	3,907	63.9
Age		
Under 21	3,252	53.2
21 or older	2,860	46.8
Race		
White	5,140	84.1
Black/African American	261	4.3
Asian	349	5.7
Native American/Alaskan Native	19	0.3
Hawaiian/Pacific Islander	7	0.1
More than one race	177	2.9
Other	127	2.1
No answer	32	0.5
Ethnicity		
Hispanic	235	3.8
Non-Hispanic	5,835	95.5
No answer	42	0.7
Classification		
Freshman	1,820	29.8
Sophomore	1,476	24.1
Junior	1,249	20.4
Senior	1,278	20.9
Grad/professional	188	3.1
Not seeking a degree	28	0.5
Other	50	0.8
No answer	23	0.4

Table 20 (continued). Demographic characteristics of survey participants

	Frequency	%
Student status		
Full-time	5,707	93.4
Part-time	366	6.0
No answer	39	0.6
Location of residence		
On-campus	3,111	50.9
Off-campus	2,964	48.5
No answer	37	0.6
Type of residence		
House/apartment/etc.	3,169	51.8
Residence hall	2,262	37.0
Fraternity/Sorority	351	5.7
Other campus housing	150	2.5
Other	143	2.3
No answer	37	0.6
Type of institution		
Private	1,561	25.5
Public	4,551	74.5

REFERENCES

- Arria, A. M., O'Grady, K. E., Caldeira, K. M., Vincent, K. B., & Wish, E. D. (2008). Nonmedical use of prescription stimulants and analgesics: Associations with social and academic behaviors among college students. *Journal Of Drug Issues*, 38(4), 1045-1060.
- Barnes, G.M., Welge, J.W., Hoffman, J.H., & Tidwell, M.O. (2010) Comparisons of gambling and alcohol use among college students and non-college young people in the United States. *Journal of American College Health*, 58(5), 443-452.
- Behrendt, S., Wittchen, H. U., Höfler, M., Lieb, R., & Beesdo, K. (2009). Transitions from first substance use to substance use disorders in adolescence: Is early onset associated with a rapid escalation? *Drug and Alcohol Dependence*, 99(1-3), 68-78.
- Borsari, B., & Carey, K. B. (2003). Descriptive and injunctive norms in college drinking: A meta-analytic integration. *Journal of Studies on Alcohol*, 64(3), 331.
- Brown, R. L., Matousek, T. A., & Radue, M. B. (2009). Legal-age students' provision of alcohol to underage college students: An exploratory study. *Journal of American College Health*, 57(6), 611-618.
- Brown, S., McGue, M., Maggs, J., Schulenberg, J., Hingson, R., Swartzwelder, S., ... Murphy, S. (2008). A developmental perspective on alcohol and youths 16 to 20 years of age. *Pediatrics*, 121 Suppl 4, S290-S310. doi:10.1542/peds.2007-2243D
- Fabian, L. E. A., Toomey, T. L., Lenk, K. M., & Erickson, D. J. (2008). How do underage college students get alcohol? *Journal of Drug Education*, 38(1), 15-26.
- Garnier-Dykstra, L. M., Caldeira, K. M., Vincent, K. B., O'Grady, K. E., & Arria, A. M. (2012). Nonmedical use of prescription stimulants during college: Four-year trends in exposure opportunity, use, motives, and sources. *Journal Of American College Health*, 60(3), 226-234.
- Grant, B. F., & Dawson, D. A. (1998). Age of onset of drug use and its association with DSM-IV drug abuse and dependence: results from the National Longitudinal Alcohol Epidemiologic Survey. *Journal Of Substance Abuse*, 10(2), 163-173.
- Hingson, R.W., & Wenxing, Z. (2009). Age of drinking onset, alcohol use disorders, frequent heavy drinking, and unintentionally injuring oneself and others after drinking. *Pediatrics*, 123(6), 1477-1484.
- Hingson, R.W., Zha, W., & Weitzman, E.R. (2009). Magnitude of and trends in alcohol-related mortality and morbidity among U.S. college students age 18-24: 1998 to 2005. *Journal of Studies on Alcohol and Drugs Supplement*, 16, 12-20.
- Johnston, L.D., O'Malley, P.M., Bachman, J.G., & Schulenberg, J.E. (2009). *Monitoring the Future, National Survey Results on Drug Use, 1975-2008. Volume II: College Students and Adults Ages 19-50*. NIH Pub. No. 09-7403. Bethesda, MD: National Institute on Drug Abuse.
- Johnston, L.D., O'Malley, P.M., Bachman, J.G., & Schulenberg, J. E. (2013). *Monitoring the Future National Survey Results on Drug Use, 1975-2012. Volume II: College Students and Adults Ages 19-50*. Ann Arbor: Institute for Social Research, The University of Michigan.

- Kilmer, J. R., Walker, D. D., Lee, C. M., Palmer, R. S., Mallett, K. A., Fabiano, P., et al. (2006). Misperceptions of college student marijuana use: Implications for prevention. *Journal of Studies on Alcohol*, 67(2), 277-281.
- Marczinski C.A. (2011). Alcohol mixed with energy drinks: consumption patterns and motivations for use in U.S. college students. *International Journal of Environmental Research And Public Health*, 8(8), 3232-3245.
- Martens, M. P., Page, J. C., Mowry, E. S., Damann, K. M., Taylor, K. K., & Cimini, M. D. (2006). Differences between actual and perceived student norms: An examination of alcohol use, drug use, and sexual behavior. *Journal of American College Health*, 54(5), 295-300.
- McCabe, S., Knight, J. R., Teter, C. J., & Wechsler, H. (2005). Non-medical use of prescription stimulants among US college students: Prevalence and correlates from a national survey. *Addiction*, 100(1), 96-106.
- Moritsugu, K., & Li, T. (2008). Underage drinking: understanding and reducing risk in the context of human development. Foreword. *Pediatrics*, 121 Suppl 4, S231-S232. doi:10.1542/peds.2007-2243H
- National Institute on Alcohol Abuse and Alcoholism, Interdisciplinary Team on Underage Drinking Research. (2004/2005). The scope of the problem. *Alcohol Research & Health*, 28(3), 111-120.
- National Institute on Alcohol Abuse and Alcoholism. (2002). *A call to action: Changing the culture of drinking at U.S. colleges* (NIH Pub. No. 02-5010). Bethesda, MD: NIAAA.
- National Institute on Alcohol Abuse and Alcoholism. (2004). NIAAA council approves definition of binge drinking. *NIAAA Newsletter* (3), 3. Retrieved from http://pubs.niaaa.nih.gov/publications/Newsletter/winter2004/Newsletter_Number3.pdf
- Neighbors, C., Lee, C. M., Lewis, M. A., Fossos, N., & Larimer, M. E. (2007). Are social norms the best predictor of outcomes among heavy-drinking college students? *Journal of Studies on Alcohol & Drugs*, 68(4), 556-565.
- O'Brien, M., McCoy, T., Rhodes, S., Wagoner, A., & Wolfson, M. (2008). Caffeinated cocktails: Energy drink consumption, high-risk drinking, and alcohol-related consequences among college students. *Academic Emergency Medicine: Official Journal Of The Society For Academic Emergency Medicine*, 15(5), 453-460.
- Office of National Drug Control Policy (n.d.). *Epidemic: Responding to America's prescription drug abuse crisis*. Retrieved from <http://www.whitehouse.gov/ondcp/prescription-drug-abuse>.
- Perkins, H. W., Haines, M. P., & Rice, R. (2005). Misperceiving the college drinking norm and related problems: A nationwide study of exposure to prevention information, perceived norms and student alcohol misuse. *Journal of Studies on Alcohol*, 470-478.
- Spitzer, R.L., Kroenke, K., Williams, J.B. (1999). Validation and utility of a self-report version of Prime MD: the PHQ primary care study. *JAMA: Journal Of The American Medical Association*, 282(18), 1737.
- Stinchfield, R., Kushner, M. G., & Winters, K. C. (2005). Alcohol use and prior substance abuse treatment in relation to gambling problem severity and gambling treatment outcome. *Journal of Gambling Studies*, 21(3), 273-297.

- Substance Abuse and Mental Health Services Administration, Office of Applied Studies. (2007a). *The NSDUH Report: Depression and the initiation of cigarette, alcohol and other drug use among young adults*. Rockville, MD.
- Substance Abuse and Mental Health Services Administration, U.S. Department of Health and Human Services. (2007b). *Building bridges: Mental health on campus: Student mental health leaders and college administrators, counselors, and faculty in dialogue*. (HHS Pub. No. SMA-4310). Rockville, MD: Center for Mental Health Services, Substance Abuse and Mental Health Services Administration.
- Suicide Prevention Resource Center. (2004). Promoting mental health and preventing suicide in college and university settings. Newton, MA: Education Development Center.
- Teter, C. J., McCabe, S., LaGrange, K., Cranford, J. A., & Boyd, C. J. (2006). Illicit use of specific prescription stimulants among college students: Prevalence, motives, and routes of administration. *Pharmacotherapy*, 26(10), 1501-1510.
- Wechsler, H., & Nelson, T. F. (2008). What we have learned from the Harvard School of Public Health College Alcohol Study: Focusing attention on college student alcohol consumption and the environmental conditions that promote it. *Journal of Studies on Alcohol & Drugs*, 69(4), 481-490.
- Wechsler, H., Kuo, M., Lee, H., & Dowdall, G. W. (2000). Environmental correlates of underage alcohol use and related problems of college students. *American Journal Of Preventive Medicine*, 19(1), 24-29.
- Wechsler, H., Lee, J. E., Kuo, M., & Lee, H. (2000). College binge drinking in the 1990s: A continuing problem. *Journal of American College Health*, 48(5), 199.
- Wechsler, H., Lee, J. E., Nelson, T. F., & Kuo, M. (2002). Underage college students' drinking behavior, access to alcohol, and the influence of deterrence policies. *Journal of American College Health*, 50(5), 223.
- Winters, K. C., & Anderson, N. (2000). Gambling involvement and drug use among adolescents. *Journal Of Gambling Studies*, 16(2-3), 175-198.

FREQUENCY TABLES

Number of times in the past year substance was used: Cigarettes

	Frequency	Percent	Valid Percent	Cumulative Percent
Did not answer	8	.1	.1	.1
Never	4425	72.4	72.4	72.5
1-5 times	680	11.1	11.1	83.7
Valid 6-19 times	253	4.1	4.1	87.8
20-39 times	152	2.5	2.5	90.3
40+ times	594	9.7	9.7	100.0
Total	6112	100.0	100.0	

Number of times in the past year substance was used: Cigars

	Frequency	Percent	Valid Percent	Cumulative Percent
Did not answer	25	.4	.4	.4
Never	4612	75.5	75.5	75.9
1-5 times	1087	17.8	17.8	93.7
Valid 6-19 times	274	4.5	4.5	98.1
20-39 times	70	1.1	1.1	99.3
40+ times	44	.7	.7	100.0
Total	6112	100.0	100.0	

Number of times in the past year substance was used: Chewing or smokeless tobacco

	Frequency	Percent	Valid Percent	Cumulative Percent
Did not answer	45	.7	.7	.7
Never	5644	92.3	92.3	93.1
1-5 times	218	3.6	3.6	96.6
Valid 6-19 times	50	.8	.8	97.5
20-39 times	33	.5	.5	98.0
40+ times	122	2.0	2.0	100.0
Total	6112	100.0	100.0	

Number of times in the past year substance was used: Smoking tobacco with hookah or water pipe

	Frequency	Percent	Valid Percent	Cumulative Percent
Did not answer	53	.9	.9	.9
Never	4352	71.2	71.2	72.1
1-5 times	1070	17.5	17.5	89.6
Valid 6-19 times	390	6.4	6.4	96.0
20-39 times	147	2.4	2.4	98.4
40+ times	100	1.6	1.6	100.0
Total	6112	100.0	100.0	

Number of times in the past year substance was used: Alcohol

		Frequency	Percent	Valid Percent	Cumulative Percent
Valid	Did not answer	12	.2	.2	.2
	Never	1122	18.4	18.4	18.6
	1-5 times	1095	17.9	17.9	36.5
	6-19 times	1097	17.9	17.9	54.4
	20-39 times	1051	17.2	17.2	71.6
	40+ times	1735	28.4	28.4	100.0
	Total	6112	100.0	100.0	

Number of times in the past year substance was used: Marijuana

		Frequency	Percent	Valid Percent	Cumulative Percent
Valid	Did not answer	18	.3	.3	.3
	Never	4045	66.2	66.2	66.5
	1-5 times	869	14.2	14.2	80.7
	6-19 times	346	5.7	5.7	86.4
	20-39 times	215	3.5	3.5	89.9
	40+ times	619	10.1	10.1	100.0
	Total	6112	100.0	100.0	

Number of times in the past year substance was used: Cocaine

		Frequency	Percent	Valid Percent	Cumulative Percent
Valid	Did not answer	20	.3	.3	.3
	Never	5922	96.9	96.9	97.2
	1-5 times	132	2.2	2.2	99.4
	6-19 times	29	.5	.5	99.9
	20-39 times	6	.1	.1	100.0
	40+ times	3	.0	.0	100.0
	Total	6112	100.0	100.0	

Number of times in the past year substance was used: Hallucinogens

		Frequency	Percent	Valid Percent	Cumulative Percent
Valid	Did not answer	22	.4	.4	.4
	Never	5667	92.7	92.7	93.1
	1-5 times	350	5.7	5.7	98.8
	6-19 times	62	1.0	1.0	99.8
	20-39 times	8	.1	.1	100.0
	40+ times	3	.0	.0	100.0
	Total	6112	100.0	100.0	

Number of times in the past year substance was used: Heroin

		Frequency	Percent	Valid Percent	Cumulative Percent
Valid	Did not answer	31	.5	.5	.5
	Never	6060	99.1	99.1	99.7
	1-5 times	10	.2	.2	99.8
	6-19 times	2	.0	.0	99.9
	20-39 times	3	.0	.0	99.9
	40+ times	6	.1	.1	100.0
	Total	6112	100.0	100.0	

Number of times in the past year substance was used: Inhalants

		Frequency	Percent	Valid Percent	Cumulative Percent
Valid	Did not answer	24	.4	.4	.4
	Never	6040	98.8	98.8	99.2
	1-5 times	36	.6	.6	99.8
	6-19 times	9	.1	.1	100.0
	20-39 times	1	.0	.0	100.0
	40+ times	2	.0	.0	100.0
	Total	6112	100.0	100.0	

Number of times in the past year substance was used: Prescription pills not prescribed to you

		Frequency	Percent	Valid Percent	Cumulative Percent
Valid	Did not answer	23	.4	.4	.4
	Never	5314	86.9	86.9	87.3
	1-5 times	480	7.9	7.9	95.2
	6-19 times	185	3.0	3.0	98.2
	20-39 times	68	1.1	1.1	99.3
	40+ times	42	.7	.7	100.0
	Total	6112	100.0	100.0	

Number of times in the past year substance was used: Medications prescribed to you but used to get high

		Frequency	Percent	Valid Percent	Cumulative Percent
Valid	Did not answer	15	.2	.2	.2
	Never	5907	96.6	96.6	96.9
	1-5 times	122	2.0	2.0	98.9
	6-19 times	42	.7	.7	99.6
	20-39 times	10	.2	.2	99.7
	40+ times	16	.3	.3	100.0
	Total	6112	100.0	100.0	

Number of times in the past year substance was used: Over-the-counter medications to get high

		Frequency	Percent	Valid Percent	Cumulative Percent
Valid	Did not answer	17	.3	.3	.3
	Never	6001	98.2	98.2	98.5
	1-5 times	77	1.3	1.3	99.7
	6-19 times	7	.1	.1	99.8
	20-39 times	7	.1	.1	100.0
	40+ times	3	.0	.0	100.0
	Total	6112	100.0	100.0	

Number of times in the past year substance was used: Methamphetamine

		Frequency	Percent	Valid Percent	Cumulative Percent
Valid	Did not answer	26	.4	.4	.4
	Never	6070	99.3	99.3	99.7
	1-5 times	9	.1	.1	99.9
	6-19 times	2	.0	.0	99.9
	20-39 times	1	.0	.0	99.9
	40+ times	4	.1	.1	100.0
	Total	6112	100.0	100.0	

Number of times in the past year substance was used: Other illegal drugs

		Frequency	Percent	Valid Percent	Cumulative Percent
Valid	Did not answer	41	.7	.7	.7
	Never	5958	97.5	97.5	98.2
	1-5 times	81	1.3	1.3	99.5
	6-19 times	17	.3	.3	99.8
	20-39 times	7	.1	.1	99.9
	40+ times	8	.1	.1	100.0
	Total	6112	100.0	100.0	

Number of times in the past month substance was used: Cigarettes

		Frequency	Percent	Valid Percent	Cumulative Percent
Valid	Did not answer	420	6.9	6.9	6.9
	Never	4772	78.1	78.1	84.9
	1-5 times	420	6.9	6.9	91.8
	6-19 times	124	2.0	2.0	93.8
	20-39 times	100	1.6	1.6	95.5
	40+ times	276	4.5	4.5	100.0
	Total	6112	100.0	100.0	

Number of times in the past month substance was used: Cigars

		Frequency	Percent	Valid Percent	Cumulative Percent
Valid	Did not answer	431	7.1	7.1	7.1
	Never	5268	86.2	86.2	93.2
	1-5 times	366	6.0	6.0	99.2
	6-19 times	36	.6	.6	99.8
	20-39 times	3	.0	.0	99.9
	40+ times	8	.1	.1	100.0
	Total	6112	100.0	100.0	

Number of times in the past month substance was used: Chewing or smokeless tobacco

		Frequency	Percent	Valid Percent	Cumulative Percent
Valid	Did not answer	453	7.4	7.4	7.4
	Never	5471	89.5	89.5	96.9
	1-5 times	80	1.3	1.3	98.2
	6-19 times	37	.6	.6	98.8
	20-39 times	23	.4	.4	99.2
	40+ times	48	.8	.8	100.0
	Total	6112	100.0	100.0	

Number of times in the past month substance was used: Smoking tobacco with hookah or water pipe

		Frequency	Percent	Valid Percent	Cumulative Percent
Valid	Did not answer	440	7.2	7.2	7.2
	Never	5128	83.9	83.9	91.1
	1-5 times	459	7.5	7.5	98.6
	6-19 times	68	1.1	1.1	99.7
	20-39 times	12	.2	.2	99.9
	40+ times	5	.1	.1	100.0
	Total	6112	100.0	100.0	

Number of times in the past month substance was used: Alcohol

		Frequency	Percent	Valid Percent	Cumulative Percent
Valid	Did not answer	424	6.9	6.9	6.9
	Never	1815	29.7	29.7	36.6
	1-5 times	2300	37.6	37.6	74.3
	6-19 times	1230	20.1	20.1	94.4
	20-39 times	233	3.8	3.8	98.2
	40+ times	110	1.8	1.8	100.0
	Total	6112	100.0	100.0	

Number of times in the past month substance was used: Marijuana

		Frequency	Percent	Valid Percent	Cumulative Percent
Valid	Did not answer	430	7.0	7.0	7.0
	Never	4563	74.7	74.7	81.7
	1-5 times	590	9.7	9.7	91.3
	6-19 times	236	3.9	3.9	95.2
	20-39 times	171	2.8	2.8	98.0
	40+ times	122	2.0	2.0	100.0
	Total	6112	100.0	100.0	

Number of times in the past month substance was used: Cocaine

		Frequency	Percent	Valid Percent	Cumulative Percent
Valid	Did not answer	428	7.0	7.0	7.0
	Never	5632	92.1	92.1	99.1
	1-5 times	50	.8	.8	100.0
	6-19 times	2	.0	.0	100.0
	Total	6112	100.0	100.0	

Number of times in the past month substance was used: Hallucinogens

		Frequency	Percent	Valid Percent	Cumulative Percent
Valid	Did not answer	429	7.0	7.0	7.0
	Never	5576	91.2	91.2	98.2
	1-5 times	106	1.7	1.7	100.0
	6-19 times	1	.0	.0	100.0
	Total	6112	100.0	100.0	

Number of times in the past month substance was used: Heroin

		Frequency	Percent	Valid Percent	Cumulative Percent
Valid	Did not answer	432	7.1	7.1	7.1
	Never	5675	92.9	92.9	99.9
	1-5 times	3	.0	.0	100.0
	6-19 times	1	.0	.0	100.0
	20-39 times	1	.0	.0	100.0
	Total	6112	100.0	100.0	

Number of times in the past month substance was used: Inhalants

		Frequency	Percent	Valid Percent	Cumulative Percent
Valid	Did not answer	431	7.1	7.1	7.1
	Never	5666	92.7	92.7	99.8
	1-5 times	14	.2	.2	100.0
	6-19 times	1	.0	.0	100.0
	Total	6112	100.0	100.0	

Number of times in the past month substance was used: Prescription pills not prescribed to you

		Frequency	Percent	Valid Percent	Cumulative Percent
Valid	Did not answer	423	6.9	6.9	6.9
	Never	5391	88.2	88.2	95.1
	1-5 times	247	4.0	4.0	99.2
	6-19 times	45	.7	.7	99.9
	20-39 times	5	.1	.1	100.0
	40+ times	1	.0	.0	100.0
	Total	6112	100.0	100.0	

Number of times in the past month substance was used: Medications prescribed to you but used to get high

		Frequency	Percent	Valid Percent	Cumulative Percent
Valid	Did not answer	428	7.0	7.0	7.0
	Never	5622	92.0	92.0	99.0
	1-5 times	54	.9	.9	99.9
	6-19 times	4	.1	.1	99.9
	20-39 times	3	.0	.0	100.0
	40+ times	1	.0	.0	100.0
	Total	6112	100.0	100.0	

Number of times in the past month substance was used: Over-the-counter medications to get high

		Frequency	Percent	Valid Percent	Cumulative Percent
Valid	Did not answer	433	7.1	7.1	7.1
	Never	5652	92.5	92.5	99.6
	1-5 times	27	.4	.4	100.0
	Total	6112	100.0	100.0	

Number of times in the past month substance was used: Methamphetamine

		Frequency	Percent	Valid Percent	Cumulative Percent
Valid	Did not answer	447	7.3	7.3	7.3
	Never	5660	92.6	92.6	99.9
	1-5 times	4	.1	.1	100.0
	20-39 times	1	.0	.0	100.0
	Total	6112	100.0	100.0	

Number of times in the past month substance was used: Other illegal drugs

		Frequency	Percent	Valid Percent	Cumulative Percent
Valid	Did not answer	467	7.6	7.6	7.6
	Never	5617	91.9	91.9	99.5
	1-5 times	23	.4	.4	99.9
	6-19 times	3	.0	.0	100.0
	40+ times	2	.0	.0	100.0
	Total	6112	100.0	100.0	

Age of first time use: Cigarettes

		Frequency	Percent	Valid Percent	Cumulative Percent
Valid	Did not answer	12	.2	.2	.2
	Did not use	3756	61.5	61.5	61.6
	Under 10	62	1.0	1.0	62.7
	10-11	57	.9	.9	63.6
	12-13	210	3.4	3.4	67.0
	14-15	351	5.7	5.7	72.8
	16-17	617	10.1	10.1	82.9
	18-20	935	15.3	15.3	98.2
	21-25	107	1.8	1.8	99.9
	26+	5	.1	.1	100.0
	Total	6112	100.0	100.0	

Age of first time use: Cigars

		Frequency	Percent	Valid Percent	Cumulative Percent
Valid	Did not answer	34	.6	.6	.6
	Did not use	4024	65.8	65.8	66.4
	Under 10	10	.2	.2	66.6
	10-11	9	.1	.1	66.7
	12-13	71	1.2	1.2	67.9
	14-15	218	3.6	3.6	71.4
	16-17	621	10.2	10.2	81.6
	18-20	1011	16.5	16.5	98.1
	21-25	102	1.7	1.7	99.8
	26+	12	.2	.2	100.0
	Total	6112	100.0	100.0	

Age of first time use: Chewing or smokeless tobacco

		Frequency	Percent	Valid Percent	Cumulative Percent
Valid	Did not answer	44	.7	.7	.7
	Did not use	5353	87.6	87.6	88.3
	Under 10	11	.2	.2	88.5
	10-11	13	.2	.2	88.7
	12-13	36	.6	.6	89.3
	14-15	107	1.8	1.8	91.0
	16-17	236	3.9	3.9	94.9
	18-20	271	4.4	4.4	99.3
	21-25	38	.6	.6	100.0
	26+	3	.0	.0	100.0
	Total	6112	100.0	100.0	

Age of first time use: Smoking tobacco with hookah or water pipe

		Frequency	Percent	Valid Percent	Cumulative Percent
Valid	Did not answer	41	.7	.7	.7
	Did not use	3910	64.0	64.0	64.6
	Under 10	4	.1	.1	64.7
	10-11	3	.0	.0	64.8
	12-13	21	.3	.3	65.1
	14-15	143	2.3	2.3	67.4
	16-17	623	10.2	10.2	77.6
	18-20	1259	20.6	20.6	98.2
	21-25	97	1.6	1.6	99.8
	26+	11	.2	.2	100.0
	Total	6112	100.0	100.0	

Age of first time use: Alcohol

		Frequency	Percent	Valid Percent	Cumulative Percent
Valid	Did not answer	13	.2	.2	.2
	Did not use	900	14.7	14.7	14.9
	Under 10	102	1.7	1.7	16.6
	10-11	60	1.0	1.0	17.6
	12-13	283	4.6	4.6	22.2
	14-15	952	15.6	15.6	37.8
	16-17	1537	25.1	25.1	62.9
	18-20	1902	31.1	31.1	94.1
	21-25	357	5.8	5.8	99.9
	26+	6	.1	.1	100.0
	Total	6112	100.0	100.0	

Age of first time use: Marijuana

		Frequency	Percent	Valid Percent	Cumulative Percent
Valid	Did not answer	23	.4	.4	.4
	Did not use	3438	56.3	56.3	56.6
	Under 10	8	.1	.1	56.8
	10-11	14	.2	.2	57.0
	12-13	115	1.9	1.9	58.9
	14-15	461	7.5	7.5	66.4
	16-17	867	14.2	14.2	80.6
	18-20	1068	17.5	17.5	98.1
	21-25	109	1.8	1.8	99.9
	26+	9	.1	.1	100.0
	Total	6112	100.0	100.0	

Age of first time use: Cocaine

		Frequency	Percent	Valid Percent	Cumulative Percent
Valid	Did not answer	20	.3	.3	.3
	Did not use	5775	94.5	94.5	94.8
	Under 10	1	.0	.0	94.8
	12-13	6	.1	.1	94.9
	14-15	15	.2	.2	95.2
	16-17	52	.9	.9	96.0
	18-20	180	2.9	2.9	99.0
	21-25	60	1.0	1.0	100.0
	26+	3	.0	.0	100.0
	Total	6112	100.0	100.0	

Age of first time use: Hallucinogens

		Frequency	Percent	Valid Percent	Cumulative Percent
Valid	Did not answer	25	.4	.4	.4
	Did not use	5454	89.2	89.2	89.6
	Under 10	1	.0	.0	89.7
	12-13	12	.2	.2	89.9
	14-15	33	.5	.5	90.4
	16-17	147	2.4	2.4	92.8
	18-20	366	6.0	6.0	98.8
	21-25	73	1.2	1.2	100.0
	26+	1	.0	.0	100.0
	Total	6112	100.0	100.0	

Age of first time use: Heroin

		Frequency	Percent	Valid Percent	Cumulative Percent
Valid	Did not answer	33	.5	.5	.5
	Did not use	6034	98.7	98.7	99.3
	Under 10	1	.0	.0	99.3
	10-11	1	.0	.0	99.3
	12-13	2	.0	.0	99.3
	14-15	4	.1	.1	99.4
	16-17	10	.2	.2	99.6
	18-20	21	.3	.3	99.9
	21-25	6	.1	.1	100.0
	Total	6112	100.0	100.0	

Age of first time use: Inhalants

		Frequency	Percent	Valid Percent	Cumulative Percent
Valid	Did not answer	34	.6	.6	.6
	Did not use	5943	97.2	97.2	97.8
	Under 10	4	.1	.1	97.9
	10-11	4	.1	.1	97.9
	12-13	30	.5	.5	98.4
	14-15	30	.5	.5	98.9
	16-17	26	.4	.4	99.3
	18-20	33	.5	.5	99.9
	21-25	8	.1	.1	100.0
	Total	6112	100.0	100.0	

Age of first time use: Prescription pills not prescribed to you

		Frequency	Percent	Valid Percent	Cumulative Percent
Valid	Did not answer	18	.3	.3	.3
	Did not use	5115	83.7	83.7	84.0
	Under 10	4	.1	.1	84.0
	10-11	5	.1	.1	84.1
	12-13	38	.6	.6	84.8
	14-15	122	2.0	2.0	86.7
	16-17	266	4.4	4.4	91.1
	18-20	464	7.6	7.6	98.7
	21-25	68	1.1	1.1	99.8
	26+	12	.2	.2	100.0
	Total	6112	100.0	100.0	

Age of first time use: Medications prescribed to you but used to get high

		Frequency	Percent	Valid Percent	Cumulative Percent
Valid	Did not answer	19	.3	.3	.3
	Did not use	5737	93.9	93.9	94.2
	Under 10	2	.0	.0	94.2
	10-11	2	.0	.0	94.2
	12-13	13	.2	.2	94.5
	14-15	59	1.0	1.0	95.4
	16-17	120	2.0	2.0	97.4
	18-20	133	2.2	2.2	99.6
	21-25	22	.4	.4	99.9
	26+	5	.1	.1	100.0
	Total	6112	100.0	100.0	

Age of first time use: Over-the-counter medications to get high

		Frequency	Percent	Valid Percent	Cumulative Percent
Valid	Did not answer	27	.4	.4	.4
	Did not use	5861	95.9	95.9	96.3
	Under 10	2	.0	.0	96.4
	12-13	22	.4	.4	96.7
	14-15	51	.8	.8	97.6
	16-17	74	1.2	1.2	98.8
	18-20	68	1.1	1.1	99.9
	21-25	7	.1	.1	100.0
	Total	6112	100.0	100.0	

Age of first time use: Methamphetamine

		Frequency	Percent	Valid Percent	Cumulative Percent
Valid	Did not answer	32	.5	.5	.5
	Did not use	6026	98.6	98.6	99.1
	Under 10	1	.0	.0	99.1
	12-13	3	.0	.0	99.2
	14-15	10	.2	.2	99.3
	16-17	14	.2	.2	99.6
	18-20	17	.3	.3	99.9
	21-25	9	.1	.1	100.0
	Total	6112	100.0	100.0	

Age of first time use: Other illegal drugs

		Frequency	Percent	Valid Percent	Cumulative Percent
Valid	Did not answer	37	.6	.6	.6
	Did not use	5910	96.7	96.7	97.3
	Under 10	1	.0	.0	97.3
	12-13	11	.2	.2	97.5
	14-15	19	.3	.3	97.8
	16-17	46	.8	.8	98.6
	18-20	75	1.2	1.2	99.8
	21-25	13	.2	.2	100.0
	Total	6112	100.0	100.0	

Use of substance in the past 6 months without a prescription: Adderall

		Frequency	Percent	Valid Percent	Cumulative Percent
Valid	Did not answer	23	.4	.4	.4
	Did not use	5473	89.5	89.5	89.9
	Once	250	4.1	4.1	94.0
	Every other month	127	2.1	2.1	96.1
	Once a month	143	2.3	2.3	98.4
	Once a week	55	.9	.9	99.3
	3 times a week	28	.5	.5	99.8
	5 times a week	7	.1	.1	99.9
	Every day	6	.1	.1	100.0
	Total	6112	100.0	100.0	

Use of substance in the past 6 months without a prescription: Ritalin

		Frequency	Percent	Valid Percent	Cumulative Percent
Valid	Did not answer	37	.6	.6	.6
	Did not use	5969	97.7	97.7	98.3
	Once	50	.8	.8	99.1
	Every other month	13	.2	.2	99.3
	Once a month	28	.5	.5	99.8
	Once a week	10	.2	.2	99.9
	3 times a week	4	.1	.1	100.0
	Every day	1	.0	.0	100.0
	Total	6112	100.0	100.0	

Use of substance in the past 6 months without a prescription: Xanax

		Frequency	Percent	Valid Percent	Cumulative Percent
Valid	Did not answer	37	.6	.6	.6
	Did not use	5862	95.9	95.9	96.5
	Once	91	1.5	1.5	98.0
	Every other month	44	.7	.7	98.7
	Once a month	49	.8	.8	99.5
	Once a week	21	.3	.3	99.9
	3 times a week	7	.1	.1	100.0
	5 times a week	1	.0	.0	100.0
	Total	6112	100.0	100.0	

Use of substance in the past 6 months without a prescription: Codeine

		Frequency	Percent	Valid Percent	Cumulative Percent
Valid	Did not answer	49	.8	.8	.8
	Did not use	5900	96.5	96.5	97.3
	Once	94	1.5	1.5	98.9
	Every other month	28	.5	.5	99.3
	Once a month	25	.4	.4	99.7
	Once a week	12	.2	.2	99.9
	3 times a week	4	.1	.1	100.0
	Total	6112	100.0	100.0	

Use of substance in the past 6 months without a prescription: Vicodin

		Frequency	Percent	Valid Percent	Cumulative Percent
Valid	Did not answer	34	.6	.6	.6
	Did not use	5859	95.9	95.9	96.4
	Once	126	2.1	2.1	98.5
	Every other month	40	.7	.7	99.1
	Once a month	40	.7	.7	99.8
	Once a week	8	.1	.1	99.9
	3 times a week	5	.1	.1	100.0
	Total	6112	100.0	100.0	

Use of substance in the past 6 months without a prescription: Lortab

		Frequency	Percent	Valid Percent	Cumulative Percent
Valid	Did not answer	42	.7	.7	.7
	Did not use	5977	97.8	97.8	98.5
	Once	46	.8	.8	99.2
	Every other month	16	.3	.3	99.5
	Once a month	18	.3	.3	99.8
	Once a week	2	.0	.0	99.8
	3 times a week	9	.1	.1	100.0
	5 times a week	2	.0	.0	100.0
	Total	6112	100.0	100.0	

Use of substance in the past 6 months without a prescription: Percocet

		Frequency	Percent	Valid Percent	Cumulative Percent
Valid	Did not answer	41	.7	.7	.7
	Did not use	6018	98.5	98.5	99.1
	Once	31	.5	.5	99.6
	Every other month	7	.1	.1	99.8
	Once a month	10	.2	.2	99.9
	Once a week	3	.0	.0	100.0
	3 times a week	2	.0	.0	100.0
	Total	6112	100.0	100.0	

Use of substance in the past 6 months without a prescription: Oxycontin

		Frequency	Percent	Valid Percent	Cumulative Percent
Valid	Did not answer	40	.7	.7	.7
	Did not use	5991	98.0	98.0	98.7
	Once	44	.7	.7	99.4
	Every other month	12	.2	.2	99.6
	Once a month	17	.3	.3	99.9
	Once a week	5	.1	.1	100.0
	3 times a week	3	.0	.0	100.0
	Total	6112	100.0	100.0	

Use of substance in the past 6 months without a prescription: Morphine

		Frequency	Percent	Valid Percent	Cumulative Percent
Valid	Did not answer	45	.7	.7	.7
	Did not use	6043	98.9	98.9	99.6
	Once	14	.2	.2	99.8
	Every other month	4	.1	.1	99.9
	Once a month	4	.1	.1	100.0
	Once a week	2	.0	.0	100.0
	Total	6112	100.0	100.0	

Use of substance in the past 6 months without a prescription: Methadone

		Frequency	Percent	Valid Percent	Cumulative Percent
Valid	Did not answer	40	.7	.7	.7
	Did not use	6062	99.2	99.2	99.8
	Once	5	.1	.1	99.9
	Every other month	2	.0	.0	100.0
	Once a month	2	.0	.0	100.0
	3 times a week	1	.0	.0	100.0
	Total	6112	100.0	100.0	

Use of substance in the past 6 months without a prescription: Steroids

		Frequency	Percent	Valid Percent	Cumulative Percent
Valid	Did not answer	89	1.5	1.5	1.5
	Did not use	6015	98.4	98.4	99.9
	Once	3	.0	.0	99.9
	Once a month	2	.0	.0	100.0
	Once a week	1	.0	.0	100.0
	5 times a week	1	.0	.0	100.0
	Every day	1	.0	.0	100.0
	Total	6112	100.0	100.0	

Alcohol use in the past 6 months

		Frequency	Percent	Valid Percent	Cumulative Percent
Valid	Yes	4926	80.6	80.6	80.6
	No	1186	19.4	19.4	100.0
	Total	6112	100.0	100.0	

Reasons for drinking: To experiment

		Frequency	Percent	Valid Percent	Cumulative Percent
Valid	Did not answer	1212	19.8	19.8	19.8
	Yes	1033	16.9	16.9	36.7
	No	3800	62.2	62.2	98.9
	Unsure	67	1.1	1.1	100.0
	Total	6112	100.0	100.0	

Reasons for drinking: Because I am hooked

		Frequency	Percent	Valid Percent	Cumulative Percent
Valid	Did not answer	1220	20.0	20.0	20.0
	Yes	113	1.8	1.8	21.8
	No	4701	76.9	76.9	98.7
	Unsure	78	1.3	1.3	100.0
	Total	6112	100.0	100.0	

Reasons for drinking: To relax or relieve tension

		Frequency	Percent	Valid Percent	Cumulative Percent
Valid	Did not answer	1208	19.8	19.8	19.8
	Yes	3012	49.3	49.3	69.0
	No	1859	30.4	30.4	99.5
	Unsure	33	.5	.5	100.0
	Total	6112	100.0	100.0	

Reasons for drinking: To feel good or get high

		Frequency	Percent	Valid Percent	Cumulative Percent
Valid	Did not answer	1215	19.9	19.9	19.9
	Yes	2306	37.7	37.7	57.6
	No	2539	41.5	41.5	99.1
	Unsure	52	.9	.9	100.0
	Total	6112	100.0	100.0	

Reasons for drinking: To seek deeper insights and understanding

		Frequency	Percent	Valid Percent	Cumulative Percent
Valid	Did not answer	1225	20.0	20.0	20.0
	Yes	329	5.4	5.4	25.4
	No	4508	73.8	73.8	99.2
	Unsure	50	.8	.8	100.0
	Total	6112	100.0	100.0	

Reasons for drinking: To have a good time with friends

		Frequency	Percent	Valid Percent	Cumulative Percent
Valid	Did not answer	1202	19.7	19.7	19.7
	Yes	4236	69.3	69.3	89.0
	No	656	10.7	10.7	99.7
	Unsure	18	.3	.3	100.0
	Total	6112	100.0	100.0	

Reasons for drinking: To fit in with a group I like

		Frequency	Percent	Valid Percent	Cumulative Percent
Valid	Did not answer	1217	19.9	19.9	19.9
	Yes	627	10.3	10.3	30.2
	No	4213	68.9	68.9	99.1
	Unsure	55	.9	.9	100.0
	Total	6112	100.0	100.0	

Reasons for drinking: Because of boredom

		Frequency	Percent	Valid Percent	Cumulative Percent
Valid	Did not answer	1215	19.9	19.9	19.9
	Yes	997	16.3	16.3	36.2
	No	3847	62.9	62.9	99.1
	Unsure	53	.9	.9	100.0
	Total	6112	100.0	100.0	

Reasons for drinking: Because of anger or frustration

		Frequency	Percent	Valid Percent	Cumulative Percent
Valid	Did not answer	1216	19.9	19.9	19.9
	Yes	730	11.9	11.9	31.8
	No	4125	67.5	67.5	99.3
	Unsure	41	.7	.7	100.0
	Total	6112	100.0	100.0	

Reasons for drinking: To get through the day

		Frequency	Percent	Valid Percent	Cumulative Percent
Valid	Did not answer	1216	19.9	19.9	19.9
	Yes	168	2.7	2.7	22.6
	No	4701	76.9	76.9	99.6
	Unsure	27	.4	.4	100.0
	Total	6112	100.0	100.0	

Reasons for drinking: To increase the effects of other drug(s)

		Frequency	Percent	Valid Percent	Cumulative Percent
Valid	Did not answer	1216	19.9	19.9	19.9
	Yes	184	3.0	3.0	22.9
	No	4692	76.8	76.8	99.7
	Unsure	20	.3	.3	100.0
	Total	6112	100.0	100.0	

Reasons for drinking: To decrease the effects of other drug(s)

		Frequency	Percent	Valid Percent	Cumulative Percent
Valid	Did not answer	1217	19.9	19.9	19.9
	Yes	69	1.1	1.1	21.0
	No	4805	78.6	78.6	99.7
	Unsure	21	.3	.3	100.0
	Total	6112	100.0	100.0	

Reasons for drinking: To get to sleep

		Frequency	Percent	Valid Percent	Cumulative Percent
Valid	Did not answer	1217	19.9	19.9	19.9
	Yes	458	7.5	7.5	27.4
	No	4412	72.2	72.2	99.6
	Unsure	25	.4	.4	100.0
	Total	6112	100.0	100.0	

Reasons for drinking: Because it tastes good

		Frequency	Percent	Valid Percent	Cumulative Percent
Valid	Did not answer	1218	19.9	19.9	19.9
	Yes	2758	45.1	45.1	65.1
	No	2070	33.9	33.9	98.9
	Unsure	66	1.1	1.1	100.0
	Total	6112	100.0	100.0	

Reasons for drinking: To get away from my problems

		Frequency	Percent	Valid Percent	Cumulative Percent
Valid	Did not answer	1231	20.1	20.1	20.1
	Yes	701	11.5	11.5	31.6
	No	4109	67.2	67.2	98.8
	Unsure	71	1.2	1.2	100.0
	Total	6112	100.0	100.0	

Combined alcohol with energy drinks

		Frequency	Percent	Valid Percent	Cumulative Percent
Valid	Did not answer	1191	19.5	19.5	19.5
	Yes	1507	24.7	24.7	44.1
	No	3414	55.9	55.9	100.0
	Total	6112	100.0	100.0	

Combined alcohol with stimulants

		Frequency	Percent	Valid Percent	Cumulative Percent
Valid	Did not answer	1190	19.5	19.5	19.5
	Yes	331	5.4	5.4	24.9
	No	4591	75.1	75.1	100.0
	Total	6112	100.0	100.0	

Consequences of alcohol use: Friends or family members worried or complained about your drinking

		Frequency	Percent	Valid Percent	Cumulative Percent
Valid	Did not answer	1205	19.7	19.7	19.7
	Never	4267	69.8	69.8	89.5
	Once	349	5.7	5.7	95.2
	Twice	148	2.4	2.4	97.7
	3-5 times	104	1.7	1.7	99.4
	6-9 times	21	.3	.3	99.7
	10+ times	18	.3	.3	100.0
	Total	6112	100.0	100.0	

Consequences of alcohol use: Had a hangover

		Frequency	Percent	Valid Percent	Cumulative Percent
Valid	Did not answer	1205	19.7	19.7	19.7
	Never	1927	31.5	31.5	51.2
	Once	944	15.4	15.4	66.7
	Twice	619	10.1	10.1	76.8
	3-5 times	753	12.3	12.3	89.1
	6-9 times	317	5.2	5.2	94.3
	10+ times	347	5.7	5.7	100.0
	Total	6112	100.0	100.0	

Consequences of alcohol use: Felt bad/guilty about your drinking

		Frequency	Percent	Valid Percent	Cumulative Percent
Valid	Did not answer	1230	20.1	20.1	20.1
	Never	3445	56.4	56.4	76.5
	Once	667	10.9	10.9	87.4
	Twice	332	5.4	5.4	92.8
	3-5 times	301	4.9	4.9	97.8
	6-9 times	77	1.3	1.3	99.0
	10+ times	60	1.0	1.0	100.0
	Total	6112	100.0	100.0	

Consequences of alcohol use: Been unable to stop drinking when you wanted to

		Frequency	Percent	Valid Percent	Cumulative Percent
Valid	Did not answer	1210	19.8	19.8	19.8
	Never	4510	73.8	73.8	93.6
	Once	102	1.7	1.7	95.3
	Twice	72	1.2	1.2	96.4
	3-5 times	89	1.5	1.5	97.9
	6-9 times	37	.6	.6	98.5
	10+ times	92	1.5	1.5	100.0
	Total	6112	100.0	100.0	

Consequences of alcohol use: Created problems between you and your friends or family members

		Frequency	Percent	Valid Percent	Cumulative Percent
Valid	Did not answer	1208	19.8	19.8	19.8
	Never	4387	71.8	71.8	91.5
	Once	280	4.6	4.6	96.1
	Twice	117	1.9	1.9	98.0
	3-5 times	86	1.4	1.4	99.4
	6-9 times	23	.4	.4	99.8
	10+ times	11	.2	.2	100.0
	Total	6112	100.0	100.0	

Consequences of alcohol use: Gotten into trouble at work or school because of drinking

		Frequency	Percent	Valid Percent	Cumulative Percent
Valid	Did not answer	1207	19.7	19.7	19.7
	Never	4743	77.6	77.6	97.3
	Once	113	1.8	1.8	99.2
	Twice	24	.4	.4	99.6
	3-5 times	15	.2	.2	99.8
	6-9 times	6	.1	.1	99.9
	10+ times	4	.1	.1	100.0
	Total	6112	100.0	100.0	

Consequences of alcohol use: Gone to anyone for help to reduce your drinking

		Frequency	Percent	Valid Percent	Cumulative Percent
Valid	Did not answer	1208	19.8	19.8	19.8
	Never	4838	79.2	79.2	98.9
	Once	40	.7	.7	99.6
	Twice	14	.2	.2	99.8
	3-5 times	9	.1	.1	100.0
	6-9 times	1	.0	.0	100.0
	10+ times	2	.0	.0	100.0
	Total	6112	100.0	100.0	

Consequences of alcohol use: Been hurt or injured because of drinking

		Frequency	Percent	Valid Percent	Cumulative Percent
Valid	Did not answer	1211	19.8	19.8	19.8
	Never	4334	70.9	70.9	90.7
	Once	328	5.4	5.4	96.1
	Twice	138	2.3	2.3	98.3
	3-5 times	82	1.3	1.3	99.7
	6-9 times	13	.2	.2	99.9
	10+ times	6	.1	.1	100.0
	Total	6112	100.0	100.0	

Consequences of alcohol use: Been ticketed or arrested because of drinking

		Frequency	Percent	Valid Percent	Cumulative Percent
Valid	Did not answer	1209	19.8	19.8	19.8
	Never	4803	78.6	78.6	98.4
	Once	91	1.5	1.5	99.9
	Twice	7	.1	.1	100.0
	3-5 times	2	.0	.0	100.0
	Total	6112	100.0	100.0	

Consequences of alcohol use: Been arrested for drunk driving

		Frequency	Percent	Valid Percent	Cumulative Percent
Valid	Did not answer	1208	19.8	19.8	19.8
	Never	4887	80.0	80.0	99.7
	Once	15	.2	.2	100.0
	3-5 times	1	.0	.0	100.0
	6-9 times	1	.0	.0	100.0
	Total	6112	100.0	100.0	

Consequences of alcohol use: Driven a car while under the influence

		Frequency	Percent	Valid Percent	Cumulative Percent
Valid	Did not answer	1216	19.9	19.9	19.9
	Never	4250	69.5	69.5	89.4
	Once	289	4.7	4.7	94.2
	Twice	173	2.8	2.8	97.0
	3-5 times	125	2.0	2.0	99.0
	6-9 times	29	.5	.5	99.5
	10+ times	30	.5	.5	100.0
	Total	6112	100.0	100.0	

Consequences of alcohol use: Gotten into physical fights when drinking

		Frequency	Percent	Valid Percent	Cumulative Percent
Valid	Did not answer	1238	20.3	20.3	20.3
	Never	4677	76.5	76.5	96.8
	Once	126	2.1	2.1	98.8
	Twice	43	.7	.7	99.5
	3-5 times	24	.4	.4	99.9
	6-9 times	2	.0	.0	100.0
	10+ times	2	.0	.0	100.0
	Total	6112	100.0	100.0	

Consequences of alcohol use: Experienced unwanted sexual attention

		Frequency	Percent	Valid Percent	Cumulative Percent
Valid	Did not answer	1217	19.9	19.9	19.9
	Never	4378	71.6	71.6	91.5
	Once	314	5.1	5.1	96.7
	Twice	118	1.9	1.9	98.6
	3-5 times	62	1.0	1.0	99.6
	6-9 times	12	.2	.2	99.8
	10+ times	11	.2	.2	100.0
	Total	6112	100.0	100.0	

Consequences of alcohol use: Engaged in risky sexual behavior

		Frequency	Percent	Valid Percent	Cumulative Percent
Valid	Did not answer	1210	19.8	19.8	19.8
	Never	4245	69.5	69.5	89.3
	Once	331	5.4	5.4	94.7
	Twice	176	2.9	2.9	97.5
	3-5 times	102	1.7	1.7	99.2
	6-9 times	23	.4	.4	99.6
	10+ times	25	.4	.4	100.0
	Total	6112	100.0	100.0	

Consequences of alcohol use: Missed class or assignments

		Frequency	Percent	Valid Percent	Cumulative Percent
Valid	Did not answer	1223	20.0	20.0	20.0
	Never	4034	66.0	66.0	86.0
	Once	368	6.0	6.0	92.0
	Twice	233	3.8	3.8	95.8
	3-5 times	178	2.9	2.9	98.8
	6-9 times	54	.9	.9	99.6
	10+ times	22	.4	.4	100.0
	Total	6112	100.0	100.0	

Consequences of alcohol use: Blacked out

		Frequency	Percent	Valid Percent	Cumulative Percent
Valid	Did not answer	1221	20.0	20.0	20.0
	Never	3432	56.2	56.2	76.1
	Once	615	10.1	10.1	86.2
	Twice	336	5.5	5.5	91.7
	3-5 times	265	4.3	4.3	96.0
	6-9 times	125	2.0	2.0	98.1
	10+ times	118	1.9	1.9	100.0
	Total	6112	100.0	100.0	

Usual type of alcohol consumed

		Frequency	Percent	Valid Percent	Cumulative Percent
Valid	Did not answer	1203	19.7	19.7	19.7
	Beer	1236	20.2	20.2	39.9
	Malt beverages	295	4.8	4.8	44.7
	Wine	694	11.4	11.4	56.1
	Liquor	2571	42.1	42.1	98.2
	High alcohol drinks	37	.6	.6	98.8
	Some other type	76	1.2	1.2	100.0
	Total	6112	100.0	100.0	

Number of days student binge drank during the past month

		Frequency	Percent	Valid Percent	Cumulative Percent
Valid	Did not answer	23	.4	.4	.4
	0	3047	49.9	49.9	50.2
	1	770	12.6	12.6	62.8
	2	562	9.2	9.2	72.0
	3	324	5.3	5.3	77.3
	4	307	5.0	5.0	82.3
	5	248	4.1	4.1	86.4
	6	170	2.8	2.8	89.2
	7	96	1.6	1.6	90.8
	8	147	2.4	2.4	93.2
	9	45	.7	.7	93.9
	10	145	2.4	2.4	96.3
	11	15	.2	.2	96.5
	12	66	1.1	1.1	97.6
	13	13	.2	.2	97.8
	14	22	.4	.4	98.2
	15	39	.6	.6	98.8
	16	8	.1	.1	98.9
	17	5	.1	.1	99.0
	18	12	.2	.2	99.2
	19	2	.0	.0	99.2
	20	18	.3	.3	99.5
	21	3	.0	.0	99.6
	22	3	.0	.0	99.6
	23	3	.0	.0	99.7
	24	2	.0	.0	99.7
	25	5	.1	.1	99.8
	26	3	.0	.0	99.9
	27	1	.0	.0	99.9
	28	2	.0	.0	99.9
	30	6	.1	.1	100.0
	Total	6112	100.0	100.0	

Number of times student binge drank during the last two weeks

		Frequency	Percent	Valid Percent	Cumulative Percent
Valid	Did not answer	34	.6	.6	.6
	0	3577	58.5	58.5	59.1
	1	995	16.3	16.3	75.4
	2	604	9.9	9.9	85.2
	3	306	5.0	5.0	90.2
	4	240	3.9	3.9	94.2
	5	147	2.4	2.4	96.6
	6	75	1.2	1.2	97.8
	7	47	.8	.8	98.6
	8	29	.5	.5	99.1
	9	10	.2	.2	99.2
	10	14	.2	.2	99.4
	11	9	.1	.1	99.6
	12	5	.1	.1	99.7
	13	5	.1	.1	99.8
	14	15	.2	.2	100.0
	Total	6112	100.0	100.0	

Age

		Frequency	Percent	Valid Percent	Cumulative Percent
Valid	21 or older	2860	46.8	46.8	46.8
	Under 21	3252	53.2	53.2	100.0
	Total	6112	100.0	100.0	

Students under 21: 1st easiest way to get alcohol

		Frequency	Percent	Valid Percent	Cumulative Percent
Valid	Did not answer	3694	60.4	60.4	60.4
	Older friends	1273	20.8	20.8	81.3
	Older siblings	109	1.8	1.8	83.0
	On-campus parties	107	1.8	1.8	84.8
	Fraternity or sorority houses	384	6.3	6.3	91.1
	Off-campus private parties	195	3.2	3.2	94.3
	Someone else on campus	141	2.3	2.3	96.6
	Buying it yourself	49	.8	.8	97.4
	Stealing it from store	1	.0	.0	97.4
	From parents without their knowledge	20	.3	.3	97.7
	From parents with their knowledge	139	2.3	2.3	100.0
	Total	6112	100.0	100.0	

Students under 21: 2nd easiest way to get alcohol

		Frequency	Percent	Valid Percent	Cumulative Percent
Valid	Did not answer	3762	61.6	61.6	61.6
	Older friends	523	8.6	8.6	70.1
	Older siblings	227	3.7	3.7	73.8
	On-campus parties	278	4.5	4.5	78.4
	Fraternity or sorority houses	305	5.0	5.0	83.4
	Off-campus private parties	614	10.0	10.0	93.4
	Someone else on campus	203	3.3	3.3	96.7
	Buying it yourself	40	.7	.7	97.4
	From parents without their knowledge	41	.7	.7	98.1
	From parents with their knowledge	119	1.9	1.9	100.0
	Total	6112	100.0	100.0	

Students under 21: 3rd easiest way to get alcohol

		Frequency	Percent	Valid Percent	Cumulative Percent
Valid	Did not answer	3831	62.7	62.7	62.7
	Older friends	296	4.8	4.8	67.5
	Older siblings	187	3.1	3.1	70.6
	On-campus parties	316	5.2	5.2	75.8
	Fraternity or sorority houses	311	5.1	5.1	80.8
	Off-campus private parties	441	7.2	7.2	88.1
	Someone else on campus	353	5.8	5.8	93.8
	Buying it yourself	53	.9	.9	94.7
	Stealing it from store	6	.1	.1	94.8
	From parents without their knowledge	85	1.4	1.4	96.2
	From parents with their knowledge	233	3.8	3.8	100.0
	Total	6112	100.0	100.0	

Students under 21: Purchased alcohol from retailer

		Frequency	Percent	Valid Percent	Cumulative Percent
Valid	Did not answer	3633	59.4	59.4	59.4
	Yes	230	3.8	3.8	63.2
	No	2249	36.8	36.8	100.0
	Total	6112	100.0	100.0	

Students under 21: Most common method to purchase alcohol from retailer

		Frequency	Percent	Valid Percent	Cumulative Percent
Valid	Did not answer	5861	95.9	95.9	95.9
	Used a fake ID	76	1.2	1.2	97.1
	Used someone elses ID	54	.9	.9	98.0
	Bought alcohol without using an ID	121	2.0	2.0	100.0
	Total	6112	100.0	100.0	

Students under 21: Easiest retail place to purchase alcohol

		Frequency	Percent	Valid Percent	Cumulative Percent
Valid	Did not answer	5876	96.1	96.1	96.1
	Bar	75	1.2	1.2	97.4
	Restaurant	68	1.1	1.1	98.5
	Grocery store	27	.4	.4	98.9
	Discount store	20	.3	.3	99.2
	Convenience store	7	.1	.1	99.4
	Drug store	9	.1	.1	99.5
	Liquor store	29	.5	.5	100.0
	Winery or microbrewery	1	.0	.0	100.0
	Total	6112	100.0	100.0	

Any drug use in the past 6 months

		Frequency	Percent	Valid Percent	Cumulative Percent
Valid	Yes	1339	21.9	21.9	21.9
	No	4773	78.1	78.1	100.0
	Total	6112	100.0	100.0	

Consequences of drug use: Abused more than one drug at a time

		Frequency	Percent	Valid Percent	Cumulative Percent
Valid	Did not answer	4775	78.1	78.1	78.1
	Never	872	14.3	14.3	92.4
	Once	106	1.7	1.7	94.1
	Twice	93	1.5	1.5	95.6
	3-5 times	126	2.1	2.1	97.7
	6-9 times	41	.7	.7	98.4
	10+ times	99	1.6	1.6	100.0
	Total	6112	100.0	100.0	

Consequences of drug use: Been unable to stop using drugs when you wanted to

		Frequency	Percent	Valid Percent	Cumulative Percent
Valid	Did not answer	4778	78.2	78.2	78.2
	Never	1205	19.7	19.7	97.9
	Once	36	.6	.6	98.5
	Twice	17	.3	.3	98.8
	3-5 times	20	.3	.3	99.1
	6-9 times	11	.2	.2	99.3
	10+ times	45	.7	.7	100.0
	Total	6112	100.0	100.0	

Consequences of drug use: Had blackouts or flashbacks

		Frequency	Percent	Valid Percent	Cumulative Percent
Valid	Did not answer	4777	78.2	78.2	78.2
	Never	1161	19.0	19.0	97.2
	Once	72	1.2	1.2	98.3
	Twice	32	.5	.5	98.9
	3-5 times	35	.6	.6	99.4
	6-9 times	15	.2	.2	99.7
	10+ times	20	.3	.3	100.0
	Total	6112	100.0	100.0	

Consequences of drug use: Felt bad or guilty about your drug use

		Frequency	Percent	Valid Percent	Cumulative Percent
Valid	Did not answer	4776	78.1	78.1	78.1
	Never	949	15.5	15.5	93.7
	Once	172	2.8	2.8	96.5
	Twice	94	1.5	1.5	98.0
	3-5 times	78	1.3	1.3	99.3
	6-9 times	14	.2	.2	99.5
	10+ times	29	.5	.5	100.0
	Total	6112	100.0	100.0	

Consequences of drug use: Had friends or family members worry/complain about your drug use

		Frequency	Percent	Valid Percent	Cumulative Percent
Valid	Did not answer	4774	78.1	78.1	78.1
	Never	1159	19.0	19.0	97.1
	Once	78	1.3	1.3	98.3
	Twice	39	.6	.6	99.0
	3-5 times	34	.6	.6	99.5
	6-9 times	8	.1	.1	99.7
	10+ times	20	.3	.3	100.0
	Total	6112	100.0	100.0	

Consequences of drug use: Created problems between you and your friends or family members

		Frequency	Percent	Valid Percent	Cumulative Percent
Valid	Did not answer	4774	78.1	78.1	78.1
	Never	1204	19.7	19.7	97.8
	Once	68	1.1	1.1	98.9
	Twice	23	.4	.4	99.3
	3-5 times	20	.3	.3	99.6
	6-9 times	6	.1	.1	99.7
	10+ times	17	.3	.3	100.0
	Total	6112	100.0	100.0	

Consequences of drug use: Engaged in illegal activities in order to obtain drugs

		Frequency	Percent	Valid Percent	Cumulative Percent
Valid	Did not answer	4777	78.2	78.2	78.2
	Never	1203	19.7	19.7	97.8
	Once	31	.5	.5	98.3
	Twice	17	.3	.3	98.6
	3-5 times	32	.5	.5	99.1
	6-9 times	15	.2	.2	99.4
	10+ times	37	.6	.6	100.0
	Total	6112	100.0	100.0	

Consequences of drug use: Gotten into physical fights

		Frequency	Percent	Valid Percent	Cumulative Percent
Valid	Did not answer	4775	78.1	78.1	78.1
	Never	1322	21.6	21.6	99.8
	Once	5	.1	.1	99.8
	Twice	7	.1	.1	100.0
	3-5 times	1	.0	.0	100.0
	10+ times	2	.0	.0	100.0
	Total	6112	100.0	100.0	

Consequences of drug use: Experienced withdrawal symptoms when you stopped taking drugs

		Frequency	Percent	Valid Percent	Cumulative Percent
Valid	Did not answer	4775	78.1	78.1	78.1
	Never	1237	20.2	20.2	98.4
	Once	40	.7	.7	99.0
	Twice	23	.4	.4	99.4
	3-5 times	23	.4	.4	99.8
	6-9 times	3	.0	.0	99.8
	10+ times	11	.2	.2	100.0
	Total	6112	100.0	100.0	

Consequences of drug use: Had medical problems

		Frequency	Percent	Valid Percent	Cumulative Percent
Valid	Did not answer	4776	78.1	78.1	78.1
	Never	1274	20.8	20.8	99.0
	Once	24	.4	.4	99.4
	Twice	19	.3	.3	99.7
	3-5 times	8	.1	.1	99.8
	6-9 times	4	.1	.1	99.9
	10+ times	7	.1	.1	100.0
	Total	6112	100.0	100.0	

Consequences of drug use: Driven a car while under the influence of drugs

		Frequency	Percent	Valid Percent	Cumulative Percent
Valid	Did not answer	4775	78.1	78.1	78.1
	Never	865	14.2	14.2	92.3
	Once	107	1.8	1.8	94.0
	Twice	71	1.2	1.2	95.2
	3-5 times	105	1.7	1.7	96.9
	6-9 times	37	.6	.6	97.5
	10+ times	152	2.5	2.5	100.0
	Total	6112	100.0	100.0	

Consequences of drug use: Gotten in trouble at work or school

		Frequency	Percent	Valid Percent	Cumulative Percent
Valid	Did not answer	4780	78.2	78.2	78.2
	Never	1291	21.1	21.1	99.3
	Once	32	.5	.5	99.9
	Twice	2	.0	.0	99.9
	3-5 times	4	.1	.1	100.0
	6-9 times	1	.0	.0	100.0
	10+ times	2	.0	.0	100.0
	Total	6112	100.0	100.0	

Consequences of drug use: Been in vulnerable situations

		Frequency	Percent	Valid Percent	Cumulative Percent
Valid	Did not answer	4780	78.2	78.2	78.2
	Never	1252	20.5	20.5	98.7
	Once	42	.7	.7	99.4
	Twice	15	.2	.2	99.6
	3-5 times	14	.2	.2	99.9
	6-9 times	2	.0	.0	99.9
	10+ times	7	.1	.1	100.0
	Total	6112	100.0	100.0	

Consequences of drug use: Engaged in risky sexual behavior

		Frequency	Percent	Valid Percent	Cumulative Percent
Valid	Did not answer	4776	78.1	78.1	78.1
	Never	1219	19.9	19.9	98.1
	Once	50	.8	.8	98.9
	Twice	28	.5	.5	99.4
	3-5 times	22	.4	.4	99.7
	6-9 times	4	.1	.1	99.8
	10+ times	13	.2	.2	100.0
	Total	6112	100.0	100.0	

Consequences of drug use: Failed a class

		Frequency	Percent	Valid Percent	Cumulative Percent
Valid	Did not answer	4778	78.2	78.2	78.2
	Never	1310	21.4	21.4	99.6
	Once	11	.2	.2	99.8
	Twice	5	.1	.1	99.9
	3-5 times	4	.1	.1	99.9
	6-9 times	1	.0	.0	100.0
	10+ times	3	.0	.0	100.0
	Total	6112	100.0	100.0	

Consequences of drug use: Missed class or assignments

		Frequency	Percent	Valid Percent	Cumulative Percent
Valid	Did not answer	4778	78.2	78.2	78.2
	Never	1114	18.2	18.2	96.4
	Once	76	1.2	1.2	97.6
	Twice	66	1.1	1.1	98.7
	3-5 times	50	.8	.8	99.5
	6-9 times	13	.2	.2	99.8
	10+ times	15	.2	.2	100.0
	Total	6112	100.0	100.0	

How do you think other students on campus feel about: Trying marijuana once or twice

		Frequency	Percent	Valid Percent	Cumulative Percent
Valid	Did not answer	29	.5	.5	.5
	Strongly approve	1441	23.6	23.6	24.1
	Somewhat approve	2279	37.3	37.3	61.3
	Neither approve or disapprove	1544	25.3	25.3	86.6
	Somewhat disapprove	373	6.1	6.1	92.7
	Strongly disapprove	446	7.3	7.3	100.0
	Total	6112	100.0	100.0	

How do you think other students on campus feel about: Smoking marijuana occasionally

		Frequency	Percent	Valid Percent	Cumulative Percent
Valid	Did not answer	43	.7	.7	.7
	Strongly approve	876	14.3	14.3	15.0
	Somewhat approve	2167	35.5	35.5	50.5
	Neither approve or disapprove	1780	29.1	29.1	79.6
	Somewhat disapprove	697	11.4	11.4	91.0
	Strongly disapprove	549	9.0	9.0	100.0
	Total	6112	100.0	100.0	

How do you think other students on campus feel about: Smoking marijuana regularly

		Frequency	Percent	Valid Percent	Cumulative Percent
Valid	Did not answer	48	.8	.8	.8
	Strongly approve	412	6.7	6.7	7.5
	Somewhat approve	1213	19.8	19.8	27.4
	Neither approve or disapprove	1794	29.4	29.4	56.7
	Somewhat disapprove	1640	26.8	26.8	83.6
	Strongly disapprove	1005	16.4	16.4	100.0
	Total	6112	100.0	100.0	

How do you think other students on campus feel about: Trying cocaine once or twice

		Frequency	Percent	Valid Percent	Cumulative Percent
Valid	Did not answer	46	.8	.8	.8
	Strongly approve	100	1.6	1.6	2.4
	Somewhat approve	402	6.6	6.6	9.0
	Neither approve or disapprove	994	16.3	16.3	25.2
	Somewhat disapprove	2073	33.9	33.9	59.1
	Strongly disapprove	2497	40.9	40.9	100.0
	Total	6112	100.0	100.0	

How do you think other students on campus feel about: Taking cocaine regularly

		Frequency	Percent	Valid Percent	Cumulative Percent
Valid	Did not answer	67	1.1	1.1	1.1
	Strongly approve	59	1.0	1.0	2.1
	Somewhat approve	107	1.8	1.8	3.8
	Neither approve or disapprove	544	8.9	8.9	12.7
	Somewhat disapprove	1027	16.8	16.8	29.5
	Strongly disapprove	4308	70.5	70.5	100.0
	Total	6112	100.0	100.0	

How do you think other students on campus feel about: Trying amphetamines once or twice

		Frequency	Percent	Valid Percent	Cumulative Percent
Valid	Did not answer	40	.7	.7	.7
	Strongly approve	600	9.8	9.8	10.5
	Somewhat approve	1410	23.1	23.1	33.5
	Neither approve or disapprove	1573	25.7	25.7	59.3
	Somewhat disapprove	1042	17.0	17.0	76.3
	Strongly disapprove	1447	23.7	23.7	100.0
	Total	6112	100.0	100.0	

How do you think other students on campus feel about: Taking amphetamines regularly

		Frequency	Percent	Valid Percent	Cumulative Percent
Valid	Did not answer	78	1.3	1.3	1.3
	Strongly approve	203	3.3	3.3	4.6
	Somewhat approve	632	10.3	10.3	14.9
	Neither approve or disapprove	1264	20.7	20.7	35.6
	Somewhat disapprove	1397	22.9	22.9	58.5
	Strongly disapprove	2538	41.5	41.5	100.0
	Total	6112	100.0	100.0	

How do you think other students on campus feel about: Having one or two alcoholic drinks nearly every day

		Frequency	Percent	Valid Percent	Cumulative Percent
Valid	Did not answer	43	.7	.7	.7
	Strongly approve	600	9.8	9.8	10.5
	Somewhat approve	1427	23.3	23.3	33.9
	Neither approve or disapprove	1800	29.5	29.5	63.3
	Somewhat disapprove	1437	23.5	23.5	86.8
	Strongly disapprove	805	13.2	13.2	100.0
	Total	6112	100.0	100.0	

How do you think other students on campus feel about: Having three or four alcoholic drinks nearly every day

		Frequency	Percent	Valid Percent	Cumulative Percent
Valid	Did not answer	38	.6	.6	.6
	Strongly approve	252	4.1	4.1	4.7
	Somewhat approve	721	11.8	11.8	16.5
	Neither approve or disapprove	1292	21.1	21.1	37.7
	Somewhat disapprove	1815	29.7	29.7	67.4
	Strongly disapprove	1994	32.6	32.6	100.0
	Total	6112	100.0	100.0	

How do you think other students on campus feel about: Having five or more drinks in one sitting

		Frequency	Percent	Valid Percent	Cumulative Percent
Valid	Did not answer	48	.8	.8	.8
	Strongly approve	647	10.6	10.6	11.4
	Somewhat approve	1294	21.2	21.2	32.5
	Neither approve or disapprove	1588	26.0	26.0	58.5
	Somewhat disapprove	1085	17.8	17.8	76.3
	Strongly disapprove	1450	23.7	23.7	100.0
	Total	6112	100.0	100.0	

How do you think other students on campus feel about: Taking steroids for body building or improved athletic performance

		Frequency	Percent	Valid Percent	Cumulative Percent
Valid	Did not answer	48	.8	.8	.8
	Strongly approve	105	1.7	1.7	2.5
	Somewhat approve	383	6.3	6.3	8.8
	Neither approve or disapprove	1349	22.1	22.1	30.8
	Somewhat disapprove	1683	27.5	27.5	58.4
	Strongly disapprove	2544	41.6	41.6	100.0
	Total	6112	100.0	100.0	

Perceived number of alcoholic drinks consumed by the typical student at the last party

		Frequency	Percent	Valid Percent	Cumulative Percent
Valid	Did not answer	33	.5	.5	.5
	0	132	2.2	2.2	2.7
	1	47	.8	.8	3.5
	2	313	5.1	5.1	8.6
	3	759	12.4	12.4	21.0
	4	947	15.5	15.5	36.5
	5	1252	20.5	20.5	57.0
	6	784	12.8	12.8	69.8
	7	524	8.6	8.6	78.4
	8	410	6.7	6.7	85.1
	9	125	2.0	2.0	87.1
	10	493	8.1	8.1	95.2
	11	31	.5	.5	95.7
	12	99	1.6	1.6	97.3
	13	24	.4	.4	97.7
	14	9	.1	.1	97.9
	15	64	1.0	1.0	98.9
	16	5	.1	.1	99.0
	17	4	.1	.1	99.1
	18	2	.0	.0	99.1
	19	1	.0	.0	99.1
	20	24	.4	.4	99.5
	21	2	.0	.0	99.5
	22	1	.0	.0	99.6
	23	3	.0	.0	99.6
	25	3	.0	.0	99.7
	26	2	.0	.0	99.7
	27	1	.0	.0	99.7
	28	1	.0	.0	99.7
	29	1	.0	.0	99.7
	30	16	.3	.3	100.0
	Total	6112	100.0	100.0	

Gambling in past year: Played cards at home

		Frequency	Percent	Valid Percent	Cumulative Percent
Valid	Did not answer	15	.2	.2	.2
	Never	5243	85.8	85.8	86.0
	1-2 times per year	490	8.0	8.0	94.0
	3-6 times per year	250	4.1	4.1	98.1
	Monthly	85	1.4	1.4	99.5
	Weekly	25	.4	.4	99.9
	3+ times per week	4	.1	.1	100.0
	Total	6112	100.0	100.0	

Gambling in past year: Gambled at a casino

		Frequency	Percent	Valid Percent	Cumulative Percent
Valid	Did not answer	22	.4	.4	.4
	Never	5312	86.9	86.9	87.3
	1-2 times per year	636	10.4	10.4	97.7
	3-6 times per year	112	1.8	1.8	99.5
	Monthly	24	.4	.4	99.9
	Weekly	5	.1	.1	100.0
	3+ times per week	1	.0	.0	100.0
	Total	6112	100.0	100.0	

Gambling in past year: Gambled on-line

		Frequency	Percent	Valid Percent	Cumulative Percent
Valid	Did not answer	40	.7	.7	.7
	Never	5994	98.1	98.1	98.7
	1-2 times per year	42	.7	.7	99.4
	3-6 times per year	18	.3	.3	99.7
	Monthly	10	.2	.2	99.9
	Weekly	5	.1	.1	100.0
	3+ times per week	3	.0	.0	100.0
	Total	6112	100.0	100.0	

Gambling in past year: Gambled at informal locations

		Frequency	Percent	Valid Percent	Cumulative Percent
Valid	Did not answer	30	.5	.5	.5
	Never	6016	98.4	98.4	98.9
	1-2 times per year	40	.7	.7	99.6
	3-6 times per year	13	.2	.2	99.8
	Monthly	10	.2	.2	100.0
	Weekly	2	.0	.0	100.0
	3+ times per week	1	.0	.0	100.0
	Total	6112	100.0	100.0	

Gambling in past year: Bet on fantasy football/basketball

		Frequency	Percent	Valid Percent	Cumulative Percent
Valid	Did not answer	23	.4	.4	.4
	Never	5587	91.4	91.4	91.8
	1-2 times per year	365	6.0	6.0	97.8
	3-6 times per year	82	1.3	1.3	99.1
	Monthly	30	.5	.5	99.6
	Weekly	19	.3	.3	99.9
	3+ times per week	6	.1	.1	100.0
	Total	6112	100.0	100.0	

Gambling in past year: Betting pools

		Frequency	Percent	Valid Percent	Cumulative Percent
Valid	Did not answer	22	.4	.4	.4
	Never	5392	88.2	88.2	88.6
	1-2 times per year	586	9.6	9.6	98.2
	3-6 times per year	79	1.3	1.3	99.5
	Monthly	24	.4	.4	99.9
	Weekly	8	.1	.1	100.0
	3+ times per week	1	.0	.0	100.0
	Total	6112	100.0	100.0	

Gambling in past year: Lottery

		Frequency	Percent	Valid Percent	Cumulative Percent
Valid	Did not answer	20	.3	.3	.3
	Never	4326	70.8	70.8	71.1
	1-2 times per year	1088	17.8	17.8	88.9
	3-6 times per year	492	8.0	8.0	97.0
	Monthly	142	2.3	2.3	99.3
	Weekly	41	.7	.7	100.0
	3+ times per week	3	.0	.0	100.0
	Total	6112	100.0	100.0	

Gambling in past year: Placed bet with bookie

		Frequency	Percent	Valid Percent	Cumulative Percent
Valid	Did not answer	57	.9	.9	.9
	Never	5966	97.6	97.6	98.5
	1-2 times per year	40	.7	.7	99.2
	3-6 times per year	23	.4	.4	99.6
	Monthly	12	.2	.2	99.8
	Weekly	7	.1	.1	99.9
	3+ times per week	7	.1	.1	100.0
	Total	6112	100.0	100.0	

Location where you gambled most frequently in past year

		Frequency	Percent	Valid Percent	Cumulative Percent
Valid	Did not answer	105	1.7	1.7	1.7
	I did not gamble in the past year	4218	69.0	69.0	70.7
	I only gambled online or playing the lottery	542	8.9	8.9	79.6
	Apartment/House	377	6.2	6.2	85.8
	Residence hall	32	.5	.5	86.3
	Fraternity/Sorority	36	.6	.6	86.9
	Other campus housing	8	.1	.1	87.0
	Casino	593	9.7	9.7	96.7
	Other	201	3.3	3.3	100.0
	Total	6112	100.0	100.0	

Consequences of gambling: Academic problems

		Frequency	Percent	Valid Percent	Cumulative Percent
Valid	Did not answer	39	.6	.6	.6
	I do not gamble	4485	73.4	73.4	74.0
	None	1579	25.8	25.8	99.9
	Occasionally	8	.1	.1	100.0
	Frequently	1	.0	.0	100.0
	Total	6112	100.0	100.0	

Consequences of gambling: Issues with legal system

		Frequency	Percent	Valid Percent	Cumulative Percent
Valid	Did not answer	45	.7	.7	.7
	I do not gamble	4485	73.4	73.4	74.1
	None	1579	25.8	25.8	100.0
	Occasionally	1	.0	.0	100.0
	Frequently	2	.0	.0	100.0
	Total	6112	100.0	100.0	

Consequences of gambling: Financial issues

		Frequency	Percent	Valid Percent	Cumulative Percent
Valid	Did not answer	47	.8	.8	.8
	I do not gamble	4483	73.3	73.3	74.1
	None	1541	25.2	25.2	99.3
	Occasionally	36	.6	.6	99.9
	Frequently	5	.1	.1	100.0
	Total	6112	100.0	100.0	

Consequences of gambling: Felt bad about gambling

		Frequency	Percent	Valid Percent	Cumulative Percent
Valid	Did not answer	56	.9	.9	.9
	I do not gamble	4471	73.2	73.2	74.1
	None	1491	24.4	24.4	98.5
	Occasionally	87	1.4	1.4	99.9
	Frequently	7	.1	.1	100.0
	Total	6112	100.0	100.0	

Consequences of gambling: Poor physical health

		Frequency	Percent	Valid Percent	Cumulative Percent
Valid	Did not answer	54	.9	.9	.9
	I do not gamble	4477	73.2	73.2	74.1
	None	1571	25.7	25.7	99.8
	Occasionally	9	.1	.1	100.0
	Frequently	1	.0	.0	100.0
	Total	6112	100.0	100.0	

Consequences of gambling: Issues with friends and family

		Frequency	Percent	Valid Percent	Cumulative Percent
Valid	Did not answer	91	1.5	1.5	1.5
	I do not gamble	4443	72.7	72.7	74.2
	None	1559	25.5	25.5	99.7
	Occasionally	17	.3	.3	100.0
	Frequently	2	.0	.0	100.0
	Total	6112	100.0	100.0	

Number of days in past month that mental health was not good

		Frequency	Percent	Valid Percent	Cumulative Percent
Valid	Did not answer	46	.8	.8	.8
	0	1428	23.4	23.4	24.1
	1	384	6.3	6.3	30.4
	2	617	10.1	10.1	40.5
	3	523	8.6	8.6	49.1
	4	289	4.7	4.7	53.8
	5	524	8.6	8.6	62.4
	6	110	1.8	1.8	64.2
	7	202	3.3	3.3	67.5
	8	74	1.2	1.2	68.7
	9	45	.7	.7	69.4
	10	359	5.9	5.9	75.3
	11	15	.2	.2	75.5
	12	68	1.1	1.1	76.6
	13	13	.2	.2	76.8
	14	35	.6	.6	77.4
	15	232	3.8	3.8	81.2
	16	22	.4	.4	81.6
	17	36	.6	.6	82.2

Number of days in past month that mental health was not good

	Frequency	Percent	Valid Percent	Cumulative Percent
18	17	.3	.3	82.4
19	13	.2	.2	82.7
20	149	2.4	2.4	85.1
21	12	.2	.2	85.3
22	15	.2	.2	85.5
23	13	.2	.2	85.7
24	21	.3	.3	86.1
25	83	1.4	1.4	87.5
26	16	.3	.3	87.7
27	14	.2	.2	87.9
28	16	.3	.3	88.2
29	10	.2	.2	88.4
30	129	2.1	2.1	90.5
Dont Know	582	9.5	9.5	100.0
Total	6112	100.0	100.0	

Number of days in past 2 weeks that you had suicidal thoughts or thoughts of hurting yourself

	Frequency	Percent	Valid Percent	Cumulative Percent
Valid Did not answer	399	6.5	6.5	6.5
0	4837	79.1	79.1	85.7
1	291	4.8	4.8	90.4
2	195	3.2	3.2	93.6
3	99	1.6	1.6	95.2
4	67	1.1	1.1	96.3
5	65	1.1	1.1	97.4
6	16	.3	.3	97.7
7	39	.6	.6	98.3
8	13	.2	.2	98.5
9	10	.2	.2	98.7
10	28	.5	.5	99.1
11	6	.1	.1	99.2
12	10	.2	.2	99.4
13	3	.0	.0	99.4
14	34	.6	.6	100.0
Total	6112	100.0	100.0	

Gender

		Frequency	Percent	Valid Percent	Cumulative Percent
Valid	Male	2205	36.1	36.1	36.1
	Female	3907	63.9	63.9	100.0
	Total	6112	100.0	100.0	

Ethnicity

		Frequency	Percent	Valid Percent	Cumulative Percent
Valid	Did not answer	42	.7	.7	.7
	Hispanic	235	3.8	3.8	4.5
	Non-Hispanic	5835	95.5	95.5	100.0
	Total	6112	100.0	100.0	

Race

		Frequency	Percent	Valid Percent	Cumulative Percent
Valid	Did not answer	32	.5	.5	.5
	White	5140	84.1	84.1	84.6
	Black	261	4.3	4.3	88.9
	Asian	349	5.7	5.7	94.6
	Native American or Alaskan Native	19	.3	.3	94.9
	Hawaiian or Pacific Islander	7	.1	.1	95.0
	More than one race	177	2.9	2.9	97.9
	Other	127	2.1	2.1	100.0
	Total	6112	100.0	100.0	

Marital status

		Frequency	Percent	Valid Percent	Cumulative Percent
Valid	Did not answer	23	.4	.4	.4
	Single, never married	5335	87.3	87.3	87.7
	Single, living with partner	380	6.2	6.2	93.9
	Married	296	4.8	4.8	98.7
	Separated	7	.1	.1	98.8
	Divorced	58	.9	.9	99.8
	Widowed	13	.2	.2	100.0
	Total	6112	100.0	100.0	

Employment status

		Frequency	Percent	Valid Percent	Cumulative Percent
Valid	Did not answer	16	.3	.3	.3
	Full-time	437	7.1	7.1	7.4
	Part-time	2571	42.1	42.1	49.5
	None	3088	50.5	50.5	100.0
	Total	6112	100.0	100.0	

Sexual identification

		Frequency	Percent	Valid Percent	Cumulative Percent
Valid	Did not answer	24	.4	.4	.4
	Heterosexual	5544	90.7	90.7	91.1
	Gay or Lesbian	167	2.7	2.7	93.8
	Bi-sexual	233	3.8	3.8	97.6
	Other	66	1.1	1.1	98.7
	Do not know/Not sure	78	1.3	1.3	100.0
	Total	6112	100.0	100.0	

Military status

		Frequency	Percent	Valid Percent	Cumulative Percent
Valid	Did not answer	14	.2	.2	.2
	Have served	71	1.2	1.2	1.4
	Have not served	6027	98.6	98.6	100.0
	Total	6112	100.0	100.0	

Student status

		Frequency	Percent	Valid Percent	Cumulative Percent
Valid	Did not answer	39	.6	.6	.6
	Full-time	5707	93.4	93.4	94.0
	Part-time	366	6.0	6.0	100.0
	Total	6112	100.0	100.0	

Classification

		Frequency	Percent	Valid Percent	Cumulative Percent
Valid	Did not answer	23	.4	.4	.4
	Freshman or first year	1820	29.8	29.8	30.2
	Sophomore or second year	1476	24.1	24.1	54.3
	Junior	1249	20.4	20.4	74.7
	Senior	1278	20.9	20.9	95.6
	Grad or professional	188	3.1	3.1	98.7
	Not seeking a degree	28	.5	.5	99.2
	Other	50	.8	.8	100.0
	Total	6112	100.0	100.0	

Location of current residence

		Frequency	Percent	Valid Percent	Cumulative Percent
Valid	Did not answer	37	.6	.6	.6
	On-campus	3111	50.9	50.9	51.5
	Off-campus	2964	48.5	48.5	100.0
	Total	6112	100.0	100.0	

Housing type

		Frequency	Percent	Valid Percent	Cumulative Percent
Valid	Did not answer	37	.6	.6	.6
	House or apartment	3169	51.8	51.8	52.5
	Residence hall	2262	37.0	37.0	89.5
	Fraternity or sorority	351	5.7	5.7	95.2
	Other campus housing	150	2.5	2.5	97.7
	Other	143	2.3	2.3	100.0
	Total	6112	100.0	100.0	

With whom do you live: Alone

		Frequency	Percent	Valid Percent	Cumulative Percent
Valid	Did not answer	5248	85.9	85.9	85.9
	Yes	864	14.1	14.1	100.0
	Total	6112	100.0	100.0	

With whom do you live: With roomates

		Frequency	Percent	Valid Percent	Cumulative Percent
Valid	Did not answer	1919	31.4	31.4	31.4
	Yes	4193	68.6	68.6	100.0
	Total	6112	100.0	100.0	

With whom do you live: With parents

		Frequency	Percent	Valid Percent	Cumulative Percent
Valid	Did not answer	5547	90.8	90.8	90.8
	Yes	565	9.2	9.2	100.0
	Total	6112	100.0	100.0	

With whom do you live: With spouse

		Frequency	Percent	Valid Percent	Cumulative Percent
Valid	Did not answer	5734	93.8	93.8	93.8
	Yes	378	6.2	6.2	100.0
	Total	6112	100.0	100.0	

With whom do you live: With children

		Frequency	Percent	Valid Percent	Cumulative Percent
Valid	Did not answer	5869	96.0	96.0	96.0
	Yes	243	4.0	4.0	100.0
	Total	6112	100.0	100.0	

With whom do you live: Other

		Frequency	Percent	Valid Percent	Cumulative Percent
Valid	Did not answer	5888	96.3	96.3	96.3
	Yes	224	3.7	3.7	100.0
	Total	6112	100.0	100.0	

Questions on 2013 Indiana College Substance Use Survey

1. How many times in the past **year** have you used...? (Mark one for each line.)

	Never	1-5 times	6-19 times	20-39 times	40 times or more
a. Cigarettes	A	B	C	D	E
b. Cigars	A	B	C	D	E
c. Chewing/smokeless tobacco	A	B	C	D	E
d. Smoking tobacco with hookah/water pipe	A	B	C	D	E
e. Alcohol (beer, wine, liquor)	A	B	C	D	E
f. Marijuana (pot, hashish, hash oil)	A	B	C	D	E
g. Cocaine (crack, rock, freebase)	A	B	C	D	E
h. Hallucinogens (LSD, PCP, ecstasy)	A	B	C	D	E
i. Heroin	A	B	C	D	E
j. Inhalants (glue, solvents, gas)	A	B	C	D	E
k. Prescription pills that are not prescribed to you	A	B	C	D	E
l. Medications prescribed to you, but you used to get high	A	B	C	D	E
m. Over-the-counter medications to get high	A	B	C	D	E
n. Methamphetamine	A	B	C	D	E
o. Other illegal drugs	A	B	C	D	E

2. How many times in the past **month** have you used...? (Mark one for each line.)

	Never	1-5 times	6-19 times	20-39 times	40 times or more
a. Cigarettes	A	B	C	D	E
b. Cigars	A	B	C	D	E
c. Chewing/smokeless tobacco	A	B	C	D	E
d. Smoking tobacco with hookah/water pipe	A	B	C	D	E
e. Alcohol (beer, wine, liquor)	A	B	C	D	E
f. Marijuana (pot, hashish, hash oil)	A	B	C	D	E
g. Cocaine (crack, rock, freebase)	A	B	C	D	E
h. Hallucinogens (LSD, PCP, ecstasy)	A	B	C	D	E
i. Heroin	A	B	C	D	E
j. Inhalants (glue, solvents, gas)	A	B	C	D	E
k. Prescription pills that are not prescribed to you	A	B	C	D	E
l. Medications prescribed to you, but you used to get high	A	B	C	D	E
m. Over-the-counter medications to get high	A	B	C	D	E
n. Methamphetamine	A	B	C	D	E
o. Other illegal drugs	A	B	C	D	E

Use this definition for the following two questions.
One drink is a 12-ounce bottle of beer, a 5-ounce glass of wine, or
one shot of liquor straight or in a mixed drink.

3. During the **past 30 days**, on how many **days** did you drink 5 or more alcoholic drinks (for males) or 4 or more alcoholic drinks (for females) in 2-3 hours or less? (If zero, enter 00. If less than 10, enter 01, 02, 03, etc.)

--	--

4. Think back over the **last two weeks**. How many **times** have you had 5 or more alcoholic drinks (for males) or 4 or more alcoholic drinks (for females) in 2-3 hours or less? (If zero, enter 00. If less than 10, enter 01, 02, 03, etc.)

--	--

5. How old were you when you **first used**... (Mark one for each line.)

	Did not use	Under 10	10- 11	12- 13	14- 15	16- 17	18- 20	21- 25	26+
a. Cigarettes	A	B	C	D	E	F	G	H	I
b. Cigars	A	B	C	D	E	F	G	H	I
c. Chewing/smokeless tobacco	A	B	C	D	E	F	G	H	I
d. Smoked tobacco with hookah/water pipe	A	B	C	D	E	F	G	H	I
e. Alcohol (beer, wine, liquor)	A	B	C	D	E	F	G	H	I
f. Marijuana (pot, hashish, hash oil)	A	B	C	D	E	F	G	H	I
g. Cocaine (crack, rock, freebase)	A	B	C	D	E	F	G	H	I
h. Hallucinogens (LSD, PCP, ecstasy)	A	B	C	D	E	F	G	H	I
i. Heroin	A	B	C	D	E	F	G	H	I
j. Inhalants (glue, solvents, gas)	A	B	C	D	E	F	G	H	I
k. Prescription pills that are not prescribed to you	A	B	C	D	E	F	G	H	I
l. Medications prescribed to you, but you used to get high	A	B	C	D	E	F	G	H	I
m. Over-the-counter medications to get high	A	B	C	D	E	F	G	H	I
n. Methamphetamine	A	B	C	D	E	F	G	H	I
o. Other illegal drugs	A	B	C	D	E	F	G	H	I

6. **In the last 6 months**, how many times have you used the following drugs *without* a prescription? (Mark one for each line.)

	Did not use	Once	Every other month	Once/ month	Once/ week	3 times/ week	5 times/ week	Every day
a. Adderall	A	B	C	D	E	F	G	H
b. Ritalin	A	B	C	D	E	F	G	H
c. Xanax	A	B	C	D	E	F	G	H
d. Codeine	A	B	C	D	E	F	G	H
e. Vicodin	A	B	C	D	E	F	G	H
f. Lortab	A	B	C	D	E	F	G	H
g. Percocet	A	B	C	D	E	F	G	H
h. Oxycontin	A	B	C	D	E	F	G	H
i. Morphine	A	B	C	D	E	F	G	H
j. Methadone	A	B	C	D	E	F	G	H
k. Steroids	A	B	C	D	E	F	G	H

7. Did you drink alcohol in the **last 6 months**?

- A. Yes (Go to question #8)
B. No (Go to Question #13)

8. Did you drink alcoholic beverages for any of the following reasons in the **last 6 months**? (Mark one for each line.)

	Yes	No	Unsure
a. To experiment (to see what it's like)	Y	N	U
b. Because I am "hooked" (I feel I have to drink)	Y	N	U
c. To relax or relieve tension	Y	N	U
d. To feel good or get high	Y	N	U
e. To seek deeper insights and understanding	Y	N	U
f. To have a good time with my friends	Y	N	U
g. To fit in with a group I like	Y	N	U
h. Because of boredom, nothing else to do	Y	N	U
i. Because of anger or frustration	Y	N	U
j. To get through the day	Y	N	U
k. To increase the effects of some other drug(s)	Y	N	U
l. To decrease (offset) the effects of some other drug(s)	Y	N	U
m. To get to sleep	Y	N	U
n. Because it tastes good	Y	N	U
o. To get away from my problems or troubles	Y	N	U

Questions on 2013 Indiana College Substance Use Survey

9. Have you combined alcohol with energy drinks (e.g., Red Bull, Monster) in the past 6 months?
 Y N

10. Have you combined alcohol with stimulants (e.g., Adderall, Ritalin) in the past 6 months?
 Y N

11. Have you experienced the following due to your **drinking in the last 6 months.** (Mark one for each line.)

		Number of Times					
		Never	Once	Twice	3-5 times	6-9 times	10+ times
a.	Had friends or family members worry or complain about your drinking	A	B	C	D	E	F
b.	Had a hangover	A	B	C	D	E	F
c.	Felt bad or guilty about your drinking	A	B	C	D	E	F
d.	Been unable to stop drinking when you wanted to	A	B	C	D	E	F
e.	Created problems between you and your friends or family members	A	B	C	D	E	F
f.	Gotten into trouble at work or school because of drinking	A	B	C	D	E	F
g.	Gone to anyone for help to reduce your drinking	A	B	C	D	E	F
h.	Been hurt or injured because of drinking	A	B	C	D	E	F
i.	Been ticketed or arrested because of your drinking	A	B	C	D	E	F
j.	Been arrested for drunk driving	A	B	C	D	E	F
k.	Driven a car while under the influence	A	B	C	D	E	F
l.	Gotten into physical fights when drinking	A	B	C	D	E	F
m.	Experienced unwanted sexual attention such as being touched when you don't want to be, forced kissing, etc.	A	B	C	D	E	F
n.	Engaged in risky sexual behavior such as having unprotected sex or sex with someone you just met because you were drinking	A	B	C	D	E	F
o.	Missed class or an assignment	A	B	C	D	E	F
p.	Forgot where you were or what you did (blacked out)	A	B	C	D	E	F

12. If you drank alcohol in the **past 6 months**, what type of alcohol did you **usually** drink? (Mark one only)

- a. Beer
- b. Malt beverages, such as Smirnoff Ice, Bacardi Silver, Hard Lemonade
- c. Wine
- d. Liquor, such as vodka, rum, whiskey
- e. High alcohol drinks, such as Everclear, Bacardi 151, 99 bananas
- f. Some other type

13. Are you 21 years or older?

- a. No, I am under 21 years old
- b. Yes

***** IF YOU ARE 21 OR OLDER, SKIP TO QUESTION #18**

*****IF YOU ARE UNDER 21 AND DID NOT DRINK ALCOHOL IN THE PAST YEAR, SKIP TO QUESTION #18*****

14. IF YOU ARE UNDER 21 and drink alcohol, what are the **three easiest ways** for you to get alcohol?

- A. older friends
- B. older siblings
- C. on-campus parties
- D. fraternity or sorority houses
- E. off-campus private parties (apartments, houses)
- F. someone else on-campus gives it to you
- G. buying it yourself
- H. stealing it from store
- I. from parents without their knowledge
- J. from parents with their knowledge

First easiest: _____ **Second easiest:** _____ **Third easiest:** _____

(Please place your choice on the response sheet)

15. IF YOU ARE UNDER 21, have you bought alcohol from a retailer (bar, restaurant, store, etc.) in the past **6 months**?

- A. Yes
- B. No

***** IF YOU ANSWERED “NO”, SKIP TO QUESTION #18**

16. IF YOU ARE UNDER 21 and have bought alcohol from a retailer, which is the most common method? (Mark one.)

- A. Used a fake ID to buy alcohol
- B. Used someone else's ID to buy alcohol
- C. Bought alcohol without using an ID

17. IF YOU ARE UNDER 21 and have bought alcohol from a retailer, where are you most easily able to purchase alcohol? (Mark one.)

- A. Bar
- B. Restaurant
- C. Grocery store (e.g., Kroger, Marsh)
- D. Discount store (e.g., Wal-Mart, Target)
- E. Convenience store (e.g., Village Pantry, Circle K)
- F. Drug store (e.g., CVS)
- G. Liquor store
- H. Winery/microbrewery

18. Did you use other drugs (e.g., illegal drugs, misuse of medications) in the past **6 months**?

- A. Yes (go to question #19)
- B. No (go to question #20)

19. Have you experienced the following due to your use of drugs **in the past 6 months**. (Mark one for each line.)

	Number of Times					10 or more
	Never	Once	Twice	3-5	6-9	
a. Abused more than one drug at a time	A	B	C	D	E	F
b. Been unable to stop using drugs when you wanted to	A	B	C	D	E	F
c. Had blackouts or flashbacks as a result of drug use	A	B	C	D	E	F
d. Felt bad or guilty about your drug use	A	B	C	D	E	F
e. Had friends or family members worry or complain about your drug use	A	B	C	D	E	F
f. Created problems between you and your friends or family members	A	B	C	D	E	F
g. Engaged in illegal activities in order to obtain drugs	A	B	C	D	E	F
h. Gotten into physical fights because you were using drugs	A	B	C	D	E	F
i. Experienced withdrawal symptoms (felt sick) when you stopped taking drugs	A	B	C	D	E	F
j. Had medical problems as a result of your drug use (e.g. memory loss, infections, convulsions, bleeding)	A	B	C	D	E	F
k. Driven a car while under the influence of drugs	A	B	C	D	E	F
l. Gotten in trouble at work or school because of your drug use	A	B	C	D	E	F
m. Been in vulnerable situations (e.g., could have been hurt and/or date raped when using drugs)	A	B	C	D	E	F
n. Engaged in risky sexual behavior such as having unprotected sex or sex with someone you just met because you were using drugs	A	B	C	D	E	F
o. Failed a class because of drug use	A	B	C	D	E	F
p. Missed class or an assignment due to drug use	A	B	C	D	E	F

20. How do you think other students on campus feel (or would feel) about... (Mark one for each line.)

	Strongly approve	Somewhat approve	Neither approve or disapprove	Somewhat disapprove	Strongly disapprove
a. Trying marijuana once or twice	A	B	C	D	E
b. Smoking marijuana occasionally	A	B	C	D	E
c. Smoking marijuana regularly	A	B	C	D	E
d. Trying cocaine once or twice	A	B	C	D	E
e. Taking cocaine regularly	A	B	C	D	E
f. Trying amphetamines (e.g., Adderall, Ritalin) once or twice	A	B	C	D	E
g. Taking amphetamines regularly	A	B	C	D	E
h. Having one or two alcoholic drinks nearly every day	A	B	C	D	E
i. Having three or four alcoholic drinks nearly every day	A	B	C	D	E
j. Having five or more alcoholic drinks in one sitting	A	B	C	D	E
k. Taking steroids for body building or improved athletic performance	A	B	C	D	E

Use this definition for the next question.
One drink is a 12-ounce bottle of beer, a 5-ounce glass of wine, or
one shot of liquor straight or in a mixed drink.

21. How many alcoholic drinks do you think the typical student at your school had the last time he/she “partied/socialized”? (If you think the typical student at your school does not drink alcohol, enter 00. If less than 10, enter 01, 02, 03, etc.)

--	--

22. In the past year, how often have you done the following for money?

	Never	1-2 times/ year	3-6 times/ year	Monthly	Weekly	3 or more times/ week
a. Played cards at home	A	B	C	D	E	F
b. Gambled at a casino	A	B	C	D	E	F
c. Gambled on-line	A	B	C	D	E	F
d. Gambled at informal locations (e.g., street corners, gambling houses)	A	B	C	D	E	F
e. Bet on fantasy football/basketball	A	B	C	D	E	F
f. Betting pools (e.g., March Madness)	A	B	C	D	E	F
g. Lottery	A	B	C	D	E	F
h. Placed bet with bookie	A	B	C	D	E	F

23. In the past year, if you gambled in ways other than online or playing the lottery, where did you most frequently gamble?

- A. I did not gamble in the past year
- B. I only gambled online or playing the lottery
- C. Apartment or house
- D. Residence hall
- E. Fraternity or sorority
- F. Other campus housing
- G. Casino
- H. Other

24. What consequences have you experienced due to your gambling?

	I do not gamble	None	Occa- sionally	Frequently
a. Academic problems (missed class, did poorly on exam, lower grades)	A	B	C	D
b. Issues with legal system	A	B	C	D
c. Financial issues	A	B	C	D
d. Felt bad about gambling	A	B	C	D
e. Poor physical health (sleep issues, depression, poor nutrition, poor hygiene)	A	B	C	D
f. Issues with friends and family (lied, strained relationships, arguments)	A	B	C	D

Questions on 2013 Indiana College Substance Use Survey

25. Thinking about your mental health, which includes stress, depression, and problems with emotions, for how many days during the past 30 days was your mental health not good?
(E.g., 00, 01, 02, 03, etc.)

--	--

___ Don't know / Not sure

26. On how many days in the past 2 weeks have you had thoughts that you would be better off dead or of hurting yourself in some way? (E.g., 00, 01, 02, 03, etc.)

--	--

27. Gender:

- M. Male
- F. Female

28. Do you consider yourself to be ...

- A. Heterosexual or straight
- B. Homosexual, gay, or lesbian
- C. Bisexual
- D. Other
- E. Don't Know/Not Sure/Questioning

29. Ethnicity:

- A. Hispanic
- B. Non-Hispanic

30. Race: (Mark one only.)

- A. White
- B. Black/African American
- C. Asian
- D. Native American/Alaskan Native
- E. Hawaiian/Pacific Islander
- F. More than one race
- G. Other

31. Marital status:

- A. Single, never married
- B. Single, living with partner
- C. Married
- D. Separated
- E. Divorced
- F. Widowed

32. Student status:

- A. Full-time
- B. Part-time

33. Classification:

- A. Freshman/First year
- B. Sophomore/Second year
- C. Junior
- D. Senior
- E. Grad/professional
- F. Not seeking a degree
- G. Other

34. Current residence as a student:

- A. On-campus
- B. Off-campus

35. Where do you live?

- A. House/apartment/etc.
- B. Residence hall
- C. Fraternity or sorority
- D. Other campus housing
- E. Other

36. With whom do you live? (Mark all that apply)

- A. Alone
- B. With roommate(s)
- C. With parent(s)
- D. With spouse
- E. With children
- F. Other

37. Are you employed?

- A. Yes, full-time
- B. Yes, part-time
- C. No

38. Have you ever served on active duty in the United States Armed Forces, either in the regular military or in a National Guard or military reserve unit? Active duty does not include training for the Reserves or National Guard, but DOES include activation, for example, for the Persian Gulf War.

- A. Yes
- B. N

Results of the Indiana College Substance Use Survey 2013

by
Rosemary King, M.P.H.
Mi Kyung Jun, Ph.D.
Junghun Lee, M.S.

*Funded by the Indiana Family and Social Services
Administration, Division of Mental Health and Addiction
through a contract with the Indiana Collegiate Action
Network*

Contact:
Indiana Prevention Resource Center
501 North Morton Street Suite 110
Bloomington, IN 47404
<http://www.drugs.indiana.edu>
drugprc@indiana.edu
Toll Free: 1-800-346-3077
Fax: 812-855-4940

